

For Research Use Only

CoraLite®594-conjugated EIF1 Monoclonal antibody

Catalog Number:CL594-67601



Basic Information

Catalog Number:

CL594-67601

Size:

100ul , Concentration: 1000 ug/ml by Nanodrop;

Source:

Mouse

Isotype:

IgG2b

Immunogen Catalog Number:

AG7843

GenBank Accession Number:

BC005118

GeneID (NCBI):

10209

UNIPROT ID:

P41567

Full Name:

eukaryotic translation initiation factor 1

Calculated MW:

13 kDa

Observed MW:

13 kDa

Purification Method:

Protein A purification

CloneNo.:

2G8C6

Recommended Dilutions:

IF/ICC 1:50-1:500

Excitation/Emission maxima wavelengths:

588 nm / 604 nm

Applications

Tested Applications:

IF/ICC

Species Specificity:

Human

Positive Controls:

IF/ICC : MCF-7 cells, HepG2 cells

Background Information

It is a necessary for scanning and involved in initiation site selection. Promotes the assembly of 48S ribosomal complexes at the authentic initiation codon of a conventional capped mRNA. Molecular weight is 13kd.

Storage

Storage:

Store at -20°C. Avoid exposure to light. Stable for one year after shipment.

Storage Buffer:

PBS with 50% Glycerol, 0.05% Proclin300, 0.5% BSA, pH 7.3.

Aliquoting is unnecessary for -20°C storage

For technical support and original validation data for this product please contact:

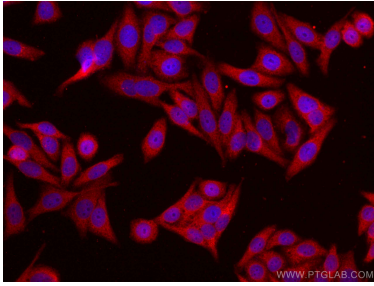
T: 1 (888) 4PTGLAB (1-888-478-4522) (toll free in USA), or 1(312) 455-8498 (outside USA)

E: proteintech@ptglab.com

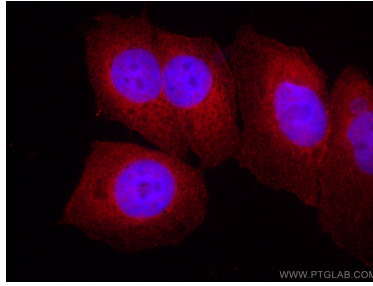
W: ptglab.com

This product is exclusively available under Proteintech Group brand and is not available to purchase from any other manufacturer.

Selected Validation Data



Immunofluorescent analysis of (-20°C Ethanol) fixed HepG2 cells using CoraLite®594 EIF1 antibody (CL594-67601, Clone: 2G8C6) at dilution of 1:200.



Immunofluorescent analysis of (4% PFA) fixed MCF-7 cells using CoraLite®594 EIF1 antibody (CL594-67601, Clone: 2G8C6) at dilution of 1:200.