

For Research Use Only

# CoraLite®594-conjugated Ch-TOG Monoclonal antibody

Catalog Number:CL594-67631



## Basic Information

<b>Catalog Number:</b> CL594-67631	<b>GenBank Accession Number:</b> BC120869	<b>Purification Method:</b> Protein G purification
<b>Size:</b> 100ul , Concentration: 1000 ug/ml by Nanodrop;	<b>GeneID (NCBI):</b> 9793	<b>CloneNo.:</b> 1H5G1
<b>Source:</b> Mouse	<b>UNIPROT ID:</b> Q14008	<b>Recommended Dilutions:</b> IF/ICC 1:50-1:500
<b>Isotype:</b> IgG1	<b>Full Name:</b> cytoskeleton associated protein 5	<b>Excitation/Emission maxima wavelengths:</b> 588 nm / 604 nm
<b>Immunogen Catalog Number:</b> AG28770	<b>Observed MW:</b> 220-240 kDa	

## Applications

<b>Tested Applications:</b> IF/ICC	<b>Positive Controls:</b> IF/ICC : HepG2 cells,
<b>Species Specificity:</b> Human, mouse, rat, pig	

## Background Information

Ch-TOG (colonic hepatic tumor-overexpressed gene), also known as XMAP215 or CKAP5, is a microtubule polymerase which can promotes cytoplasmic microtubule nucleation and elongation. Through interacting with Aurora-A and TACC3, it plays a major role in organizing spindle poles.

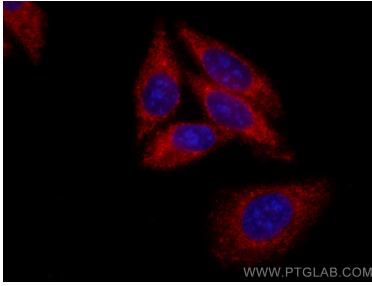
## Storage

**Storage:**  
Store at -20°C. Avoid exposure to light. Stable for one year after shipment.  
**Storage Buffer:**  
PBS with 50% Glycerol, 0.05% Proclin300, 0.5% BSA, pH 7.3.  
Aliquoting is unnecessary for -20°C storage

For technical support and original validation data for this product please contact:  
T: 1 (888) 4PTGLAB (1-888-478-4522) (toll free in USA), or 1(312) 455-8498 (outside USA)  
E: [proteintech@ptglab.com](mailto:proteintech@ptglab.com)  
W: [ptglab.com](http://ptglab.com)

This product is exclusively available under Proteintech Group brand and is not available to purchase from any other manufacturer.

## Selected Validation Data



Immunofluorescent analysis of (-20°C Methanol) fixed HepG2 cells using CoraLite®594 Ch-TOG antibody (CL594-67631, Clone: 1H5G1 ) at dilution of 1:200.