

For Research Use Only

CoraLite®594-conjugated GRIA1 Monoclonal antibody

Catalog Number:CL594-67642



Basic Information

Catalog Number: CL594-67642	GenBank Accession Number: BC111734	Purification Method: Protein A purification
Size: 100ul , Concentration: 1000 ug/ml by Nanodrop;	GeneID (NCBI): 2890	CloneNo.: 1F4A1
Source: Mouse	UNIPROT ID: P42261	Recommended Dilutions: IF-P 1:50-1:500
Isotype: IgG2b	Full Name: glutamate receptor, ionotropic, AMPA 1	Excitation/Emission maxima wavelengths: 588 nm / 604 nm
Immunogen Catalog Number: AG28932	Calculated MW: 906 aa, 102 kDa	
	Observed MW: 100 kDa	

Applications

Tested Applications: IF-P	Positive Controls: IF-P: mouse brain tissue,
Species Specificity: Human, Pig, Mouse, Rat, Rabbit	

Background Information

Glutamate receptors are the predominant excitatory neurotransmitter receptors in the mammalian brain and are activated in a variety of normal neurophysiologic processes. These receptors are heteromeric protein complexes with multiple subunits, each possessing transmembrane regions, and all arranged to form a ligand-gated ion channel. The classification of glutamate receptors is based on their activation by different pharmacologic agonists. This gene belongs to a family of alpha-amino-3-hydroxy-5-methyl-4-isoxazole propionate (AMPA) receptors.

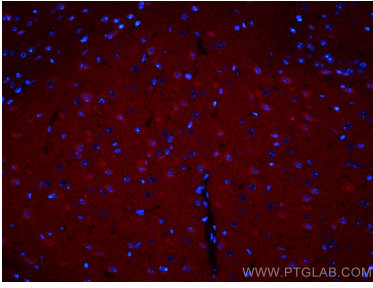
Storage

Storage:
Store at -20°C. Avoid exposure to light. Stable for one year after shipment.
Storage Buffer:
PBS with 50% Glycerol, 0.05% Proclin300, 0.5% BSA, pH 7.3.
Aliquoting is unnecessary for -20°C storage

For technical support and original validation data for this product please contact:
T: 1 (888) 4PTGLAB (1-888-478-4522) (toll free in USA), or 1(312) 455-8498 (outside USA)
E: proteintech@ptglab.com
W: ptglab.com

This product is exclusively available under Proteintech Group brand and is not available to purchase from any other manufacturer.

Selected Validation Data



Immunofluorescent analysis of (4% PFA) fixed mouse brain tissue using CoraLite®594 GRIA1 antibody (CL594-67642, Clone: 1F4A1) at dilution of 1:200.