

For Research Use Only

CoraLite® Plus 594-conjugated ETFA Monoclonal antibody

Catalog Number:CL594-67661



Basic Information

Catalog Number: CL594-67661	GenBank Accession Number: BC015526	Purification Method: Protein A purification
Size: 100ul , Concentration: 1000 ug/ml by Nanodrop;	GeneID (NCBI): 2108	CloneNo.: 3C12G5
Source: Mouse	UNIPROT ID: P13804	Recommended Dilutions: IF/ICC: 1:200-1:800
Isotype: IgG2a	Full Name: electron-transfer-flavoprotein, alpha polypeptide	Excitation/Emission maxima wavelengths: 588 nm / 604 nm
Immunogen Catalog Number: AG30257	Calculated MW: 30 kDa	
	Observed MW: 30 kDa	

Applications

Tested Applications: IF/ICC	Positive Controls: IF/ICC : HeLa cells,
Species Specificity: human, mouse, rat, pig	

Background Information

The electron transfer flavoprotein(ETF), located in the mitochondrial matrix, is a nuclear-encoded enzyme delivering to the respiratory chain by straight-chain acyl-CoA dehydrogenases and other dehydrogenases. Mitochondrial fatty acids oxidation and amino acids metabolism are affected in MADD(Multiple acyl-CoA dehydrogenase deficiency). These disorders are linked to a dysfunction of ETF. ETF is a mitochondrial matrix protein consisting of alpha- (30kDa) and beta- (28kDa) subunits encoded by the ETFA and ETFB genes, respectively. (PMID: 31996215,PMID: 16510302)

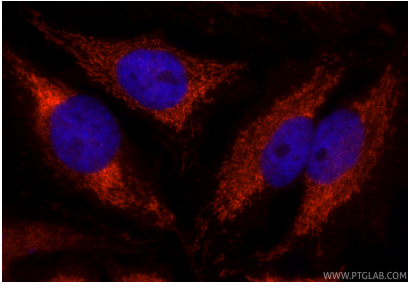
Storage

Storage:
Store at -20°C. Avoid exposure to light. Stable for one year after shipment.
Storage Buffer:
PBS with 50% glycerol, 0.05% Proclin300, 0.5% BSA, pH7.3
Aliquoting is unnecessary for -20°C storage

For technical support and original validation data for this product please contact:
T: 1 (888) 4PTGLAB (1-888-478-4522) (toll free in USA), or 1(312) 455-8498 (outside USA)
E: proteintech@ptglab.com
W: ptglab.com

This product is exclusively available under Proteintech Group brand and is not available to purchase from any other manufacturer.

Selected Validation Data



Immunofluorescent analysis of (4% PFA) fixed HeLa cells using Coralite® Plus 594 ETFA antibody (CL594-67661, Clone: 3C12G5) at dilution of 1:400.