

For Research Use Only

# CoraLite®594-conjugated Ins1 Monoclonal antibody



Catalog Number:CL594-67668

## Basic Information

<b>Catalog Number:</b> CL594-67668	<b>GenBank Accession Number:</b> NM_008386	<b>Purification Method:</b> Protein G purification
<b>Size:</b> 100ul , Concentration: 1000 µg/ml by Nanodrop;	<b>GeneID (NCBI):</b> 16333	<b>CloneNo.:</b> 1H2C11
<b>Source:</b> Mouse	<b>Full Name:</b> insulin I	<b>Recommended Dilutions:</b> IF 1:150-1:600
<b>Isotype:</b> IgG1	<b>Calculated MW:</b> 12 kDa	<b>Excitation/Emission maxima wavelengths:</b> 593 nm / 614 nm
<b>Immunogen Catalog Number:</b> AG29988		

## Applications

<b>Tested Applications:</b> IF	<b>Positive Controls:</b> IF : mouse pancreas tissue,
<b>Species Specificity:</b> mouse, rat	

## Background Information

insulin I is a peptide hormone that plays a vital role in the regulation of carbohydrate and lipid metabolism. The encoded precursor protein undergoes proteolytic cleavage to produce a disulfide-linked heterodimeric functional protein that is stored in secretory granules. An increase in blood glucose levels, among others, induces the release of insulin from the secretory granules. Mice deficient in the functional hormone encoded by this gene develop diabetes mellitus.

## Storage

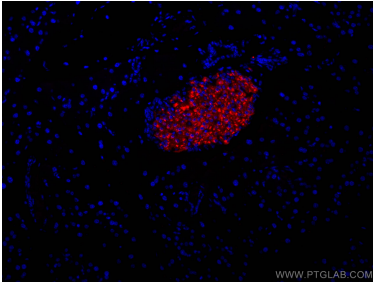
**Storage:**  
Store at -20°C. Avoid exposure to light.  
**Storage Buffer:**  
PBS with 50% Glycerol, 0.05% Proclin300, 0.5% BSA, pH 7.3.  
Aliquoting is unnecessary for -20°C storage

\*\*\* 20ul sizes contain 0.1% BSA

For technical support and original validation data for this product please contact:  
T: 1 (888) 4PTGLAB (1-888-478-4522) (toll free in USA), or 1(312) 455-8498 (outside USA) E: proteintech@ptglab.com W: ptglab.com

This product is exclusively available under Proteintech Group brand and is not available to purchase from any other manufacturer.

## Selected Validation Data



Immunofluorescent analysis of (4% PFA) fixed mouse pancreas tissue using Coralite®594-conjugated Ins1 antibody (CL594-67668, Clone: 1H2C11 ) at dilution of 1:300.