

For Research Use Only

# CoraLite®594-conjugated LRPPRC Monoclonal antibody

Catalog Number:CL594-67679

Featured Product



## Basic Information

Catalog Number:

CL594-67679

Size:

100ul , Concentration: 1000 ug/ml by Nanodrop;

Source:

Mouse

Isotype:

IgG2b

Immunogen Catalog Number:

AG30261

GenBank Accession Number:

BC050311

GeneID (NCBI):

10128

UNIPROT ID:

P42704

Full Name:

leucine-rich PPR-motif containing

Calculated MW:

1394 aa, 158 kDa

Observed MW:

130 kDa

Purification Method:

Protein A purification

CloneNo.:

3H7E1

Recommended Dilutions:

IF/ICC 1:50-1:500

Excitation/Emission maxima wavelengths:

588 nm / 604 nm

## Applications

Tested Applications:

IF/ICC

Species Specificity:

human

Positive Controls:

IF/ICC : HEK-293 cells, HeLa cells

## Background Information

LRPPRC (also called LRP130 or GP130) is a 130-kDa RNA-binding protein of the pentatricopeptide repeat family. LRPPRC localizes primarily to the mitochondria where it binds to poly(A) mRNA. It plays a role in translation or stability of mitochondrially encoded cytochrome c oxidase (COX) subunits. LRPPRC has also been shown to regulate nuclear gene transcription and to bind specific RNA molecules in both the nucleus and the cytoplasm. Mutations in LRPPRC gene are associated with the French-Canadian type of Leigh syndrome.

## Storage

Storage:

Store at -20°C. Avoid exposure to light. Stable for one year after shipment.

Storage Buffer:

PBS with 50% Glycerol, 0.05% Proclin300, 0.5% BSA, pH 7.3.

Aliquoting is unnecessary for -20°C storage

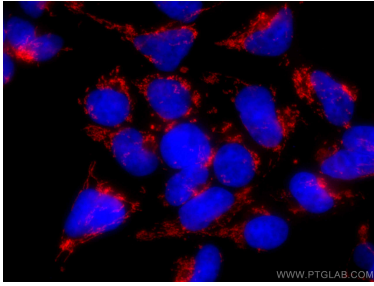
For technical support and original validation data for this product please contact:

T: 1 (888) 4PTGLAB (1-888-478-4522) (toll free in USA), or 1(312) 455-8498 (outside USA)

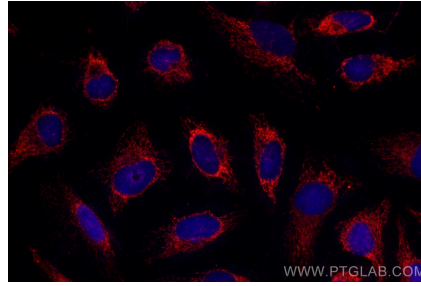
E: [proteintech@ptglab.com](mailto:proteintech@ptglab.com)  
W: [ptglab.com](http://ptglab.com)

This product is exclusively available under Proteintech Group brand and is not available to purchase from any other manufacturer.

## Selected Validation Data



Immunofluorescent analysis of (4% PFA) fixed HEK-293 cells using CoraLite@594 LRPPRC antibody (CL594-67679, Clone: 3H7E1 ) at dilution of 1:200.



Immunofluorescent analysis of (4% PFA) fixed HeLa cells using CoraLite@594 LRPPRC antibody (CL594-67679, Clone: 3H7E1 ) at dilution of 1:200.