

For Research Use Only

CoraLite®594-conjugated EIF3L Monoclonal antibody



Catalog Number:CL594-67719

Basic Information

Catalog Number:

CL594-67719

Size:

100ul , Concentration: 1000 µg/ml by
Nanodrop;

Source:

Mouse

Isotype:

IgG2a

Immunogen Catalog Number:

AG26680

GenBank Accession Number:

BC007510

GeneID (NCBI):

51386

UNIPROT ID:

Q9Y262

Full Name:

eukaryotic translation initiation
factor 3, subunit L

Calculated MW:

67 kDa

Observed MW:

67 kDa

Purification Method:

Protein A purification

CloneNo.:

1B11A10

Recommended Dilutions:

IF-P 1:50-1:500

Excitation/Emission maxima
wavelengths:

588 nm / 604 nm

Applications

Tested Applications:

IF

Species Specificity:

Human, Mouse

Positive Controls:

IF-P : mouse pancreas tissue,

Storage

Storage:

Store at -20°C. Avoid exposure to light. Stable for one year after shipment.

Storage Buffer:

PBS with 50% Glycerol, 0.05% Proclin300, 0.5% BSA, pH 7.3.

Aliquoting is unnecessary for -20°C storage

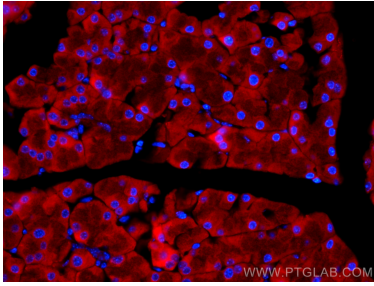
For technical support and original validation data for this product please contact:

T: 1 (888) 4PTGLAB (1-888-478-4522) (toll free
in USA), or 1(312) 455-8498 (outside USA)

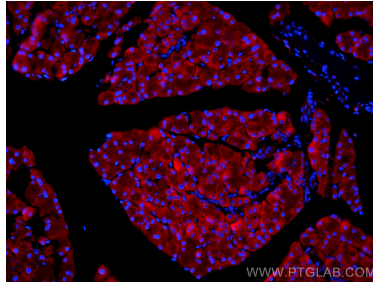
E: proteintech@ptglab.com
W: ptglab.com

This product is exclusively available under Proteintech
Group brand and is not available to purchase from any
other manufacturer.

Selected Validation Data



Immunofluorescent analysis of (4% PFA) fixed mouse pancreas tissue using Coralite®594 EIF3L antibody (CL594-67719, Clone: 1B11A10) at dilution of 1:200.



Immunofluorescent analysis of (4% PFA) fixed mouse pancreas tissue using Coralite®594 EIF3L antibody (CL594-67719, Clone: 1B11A10) at dilution of 1:200.