

For Research Use Only

# CoraLite®594-conjugated IgG lambda chain Monoclonal antibody

Catalog Number:CL594-67762



## Basic Information

Catalog Number:

CL594-67762

GenBank Accession Number:

BC007782

Purification Method:

Protein A purification

Size:

100ul , Concentration: 1000 ug/ml by Nanodrop;

GeneID (NCBI):

3537

CloneNo.:

1D12B5

Source:

Mouse

Full Name:

immunoglobulin lambda constant 1 (Mcg marker)

Recommended Dilutions:

IF-P 1:200-1:800

Isotype:

IgG2a

Calculated MW:

233 aa, 25 kDa

Excitation/Emission maxima wavelengths:

588 nm / 604 nm

Immunogen Catalog Number:

AG14783

Observed MW:

~25 kDa

## Applications

Tested Applications:

IF-P

Positive Controls:

IF-P : human tonsillitis tissue,

Species Specificity:

Human

## Background Information

This antibody detects Lambda chain of human IgG.

## Storage

Storage:

Store at -20°C. Avoid exposure to light. Stable for one year after shipment.

Storage Buffer:

PBS with 50% Glycerol, 0.05% Proclin300, 0.5% BSA, pH 7.3.

Aliquoting is unnecessary for -20°C storage

For technical support and original validation data for this product please contact:

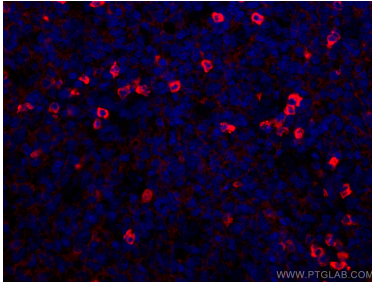
T: 1 (888) 4PTGLAB (1-888-478-4522) (toll free in USA), or 1(312) 455-8498 (outside USA)

E: [proteintech@ptglab.com](mailto:proteintech@ptglab.com)  
W: [ptglab.com](http://ptglab.com)

This product is exclusively available under Proteintech Group brand and is not available to purchase from any other manufacturer.

---

## Selected Validation Data



Immunofluorescent analysis of (4% PFA) fixed human tonsillitis tissue using Coralite®594 Human IgG lambda chain antibody (CL594-67762, Clone: 1D12B5 ) at dilution of 1:400.