

For Research Use Only

CoraLite®594-conjugated TARS Monoclonal antibody



Catalog Number:CL594-67828

Basic Information

| | | |
|---|---|---|
| Catalog Number: CL594-67828 | GenBank Accession Number: BC000517 | Purification Method: Protein A purification |
| Size: 100ul , Concentration: 1000 µg/ml by Nanodrop; | GeneID (NCBI): 6897 | CloneNo.: 1A11F10 |
| Source: Mouse | Full Name: threonyl-tRNA synthetase | Recommended Dilutions: IF 1:50-1:500 |
| Isotype: IgG2b | Calculated MW: 83 kDa | Excitation/Emission maxima wavelengths: 593 nm / 614 nm |
| Immunogen Catalog Number: AG6614 | Observed MW: 83-87 kDa | |

Applications

| | |
|--|---|
| Tested Applications: IF | Positive Controls: IF : HeLa cells, |
| Species Specificity: Human, mouse, rat | |

Background Information

TARS (Threonyl-tRNA synthetase), also known as threonine-tRNA ligase or ThrRS, belongs to the aminoacyl-tRNA synthetase family. Aminoacyl-tRNA synthetase (aaRS) catalyzes the specific esterification of an amino acid with the 3'-terminal hydroxyl group of its cognate tRNA. Specificity of aminoacylation catalyzed by aaRSs ensures the accurate translation of the genetic code in the first step of protein synthesis (PMID: 26324710). TARS has some isoforms with the molecular mass of 83, 87 kDa and other MW.

Storage

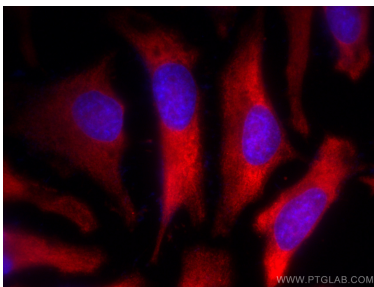
Storage:
Store at -20°C. Avoid exposure to light.
Storage Buffer:
PBS with 50% Glycerol, 0.05% Proclin300, 0.5% BSA, pH 7.3.
Aliquoting is unnecessary for -20°C storage

*** 20ul sizes contain 0.1% BSA

For technical support and original validation data for this product please contact:
T: 1 (888) 4PTGLAB (1-888-478-4522) (toll free in USA), or 1(312) 455-8498 (outside USA)
E: proteintech@ptglab.com
W: ptglab.com

This product is exclusively available under Proteintech Group brand and is not available to purchase from any other manufacturer.

Selected Validation Data



Immunofluorescent analysis of (-20°C Methanol) fixed HeLa cells using CoraLite®594 TARS antibody (CL594-67828, Clone: 1A11F10) at dilution of 1:200.