

For Research Use Only

# CoraLite®594-conjugated RAB1B Monoclonal antibody



Catalog Number:CL594-67837

## Basic Information

<b>Catalog Number:</b> CL594-67837	<b>GenBank Accession Number:</b> BC071169	<b>Purification Method:</b> Protein G purification
<b>Size:</b> 100ul , Concentration: 1000 µg/ml by Nanodrop;	<b>GeneID (NCBI):</b> 81876	<b>CloneNo.:</b> 3C2G6
<b>Source:</b> Mouse	<b>Full Name:</b> RAB1B, member RAS oncogene family	<b>Recommended Dilutions:</b> IF 1:50-1:500
<b>Isotype:</b> IgG1	<b>Calculated MW:</b> 201 aa, 22 kDa	<b>Excitation/Emission maxima wavelengths:</b> 588 nm / 604 nm
<b>Immunogen Catalog Number:</b> AG12069	<b>Observed MW:</b> 22 kDa	

## Applications

<b>Tested Applications:</b> FC (Intra), IF	<b>Positive Controls:</b> IF : NIH/3T3 cells,
<b>Species Specificity:</b> Human, mouse, rat	

## Background Information

### Storage

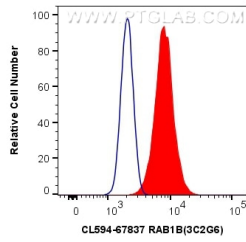
**Storage:**  
Store at -20°C. Avoid exposure to light. Stable for one year after shipment.  
**Storage Buffer:**  
PBS with 50% Glycerol, 0.05% Proclin300, 0.5% BSA, pH 7.3.  
Aliquoting is unnecessary for -20°C storage

\*\*\* 20ul sizes contain 0.1% BSA

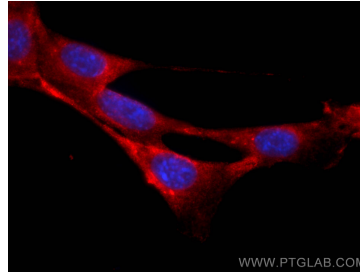
For technical support and original validation data for this product please contact:  
T: 1 (888) 4PTGLAB (1-888-478-4522) (toll free in USA), or 1(312) 455-8498 (outside USA)  
E: [proteintech@ptglab.com](mailto:proteintech@ptglab.com)  
W: [ptglab.com](http://ptglab.com)

This product is exclusively available under Proteintech Group brand and is not available to purchase from any other manufacturer.

## Selected Validation Data



1X10<sup>6</sup> NIH/3T3 cells were intracellularly stained with 0.4 ug CoraLite®594 Anti-Human RAB1B (CL594-67837, Clone:3C2G6) (red), or 0.4 ug Control Antibody. Cells were fixed with 4% PFA and permeabilized with Flow Cytometry Perm Buffer (PF00011-C).



Immunofluorescent analysis of (4% PFA) fixed NIH/3T3 cells using CoraLite®594 RAB1B antibody (CL594-67837, Clone: 3C2G6) at dilution of 1:200.