

For Research Use Only

# CoraLite®594-conjugated Synaptophysin Monoclonal antibody

Catalog Number: CL594-67864



## Basic Information

<b>Catalog Number:</b> CL594-67864	<b>GenBank Accession Number:</b> BC064550	<b>Purification Method:</b> Protein G purification
<b>Size:</b> 100ul , Concentration: 1000 µg/ml by Nanodrop;	<b>GeneID (NCBI):</b> 6855	<b>CloneNo.:</b> 4E12C4
<b>Source:</b> Mouse	<b>Full Name:</b> synaptophysin	<b>Recommended Dilutions:</b> IF 1:50-1:500
<b>Isotype:</b> IgG1	<b>Calculated MW:</b> 313 aa, 34 kDa	<b>Excitation/Emission maxima wavelengths:</b> 588 nm / 604 nm
<b>Immunogen Catalog Number:</b> AG11803		

## Applications

<b>Tested Applications:</b> FC (Intra), IF	<b>Positive Controls:</b> IF : mouse brain tissue,
<b>Species Specificity:</b> Human, Pig, Mouse, Rat	

## Background Information

Synaptophysin (SYP, also known as major synaptic vesicle protein p38) is a 38-kDa integral membrane glycoprotein that regulates synaptic vesicle endocytosis. It is the most abundant synaptic vesicle protein by mass. Synaptophysin is present in neuroendocrine cells and neurons that participate in synaptic transmission. Synaptophysin is a useful marker for identification of neuroendocrine cells and neoplasms. (PMID: 3010302; 21658579)

## Storage

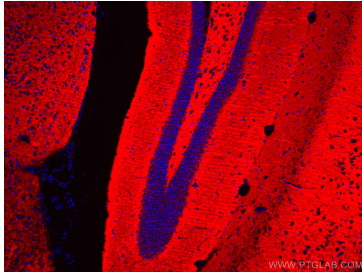
**Storage:**  
Store at -20°C. Avoid exposure to light. Stable for one year after shipment.  
**Storage Buffer:**  
PBS with 50% Glycerol, 0.05% Proclin300, 0.5% BSA, pH 7.3.  
Aliquoting is unnecessary for -20°C storage

\*\*\* 20ul sizes contain 0.1% BSA

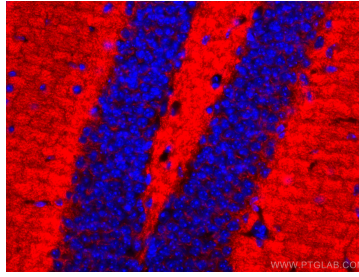
For technical support and original validation data for this product please contact:  
T: 1 (888) 4PTGLAB (1-888-478-4522) (toll free in USA), or 1(312) 455-8498 (outside USA)  
E: [proteintech@ptglab.com](mailto:proteintech@ptglab.com)  
W: [ptglab.com](http://ptglab.com)

This product is exclusively available under Proteintech Group brand and is not available to purchase from any other manufacturer.

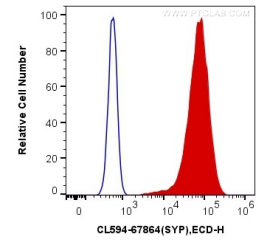
## Selected Validation Data



Immunofluorescent analysis of (4% PFA) fixed mouse brain tissue using Coralite®594 Synaptophysin antibody (CL594-67864, Clone: 4E12C4 ) at dilution of 1:200.



Immunofluorescent analysis of (4% PFA) fixed mouse brain tissue using Coralite®594 Synaptophysin antibody (CL594-67864, Clone: 4E12C4 ) at dilution of 1:200.



$1 \times 10^6$  PC-12 cells were intracellularly stained with 0.4  $\mu$ g Coralite®594 Anti-Human Synaptophysin (CL594-67864, Clone:4E12C4) (red), or 0.4  $\mu$ g Mouse IgG1 Isotype Control (CL594-66360, Clone: T1F8D3F10) (blue). Cells were fixed with 4% PFA and permeabilized with Flow Cytometry Perm Buffer (PF00011-C).