

For Research Use Only

# CoraLite®594-conjugated FARSB Monoclonal antibody

Catalog Number: CL594-67924

Featured Product



## Basic Information

Catalog Number:

CL594-67924

Size:

100ul , Concentration: 1000 ug/ml by Nanodrop;

Source:

Mouse

Isotype:

IgG2a

Immunogen Catalog Number:

AG9695

GenBank Accession Number:

BC017783

GeneID (NCBI):

10056

UNIPROT ID:

Q9NSD9

Full Name:

phenylalanyl-tRNA synthetase, beta subunit

Calculated MW:

589 aa, 66 kDa

Observed MW:

66 kDa

Purification Method:

Protein A purification

CloneNo.:

1H10C2

Recommended Dilutions:

IF/ICC 1:50-1:500

Excitation/Emission maxima wavelengths:

588 nm / 604 nm

## Applications

Tested Applications:

IF/ICC

Species Specificity:

human

Positive Controls:

IF/ICC : U-251 cells,

## Storage

Storage:

Store at -20°C. Avoid exposure to light. Stable for one year after shipment.

Storage Buffer:

PBS with 50% Glycerol, 0.05% Proclin300, 0.5% BSA, pH 7.3.

Aliquoting is unnecessary for -20°C storage

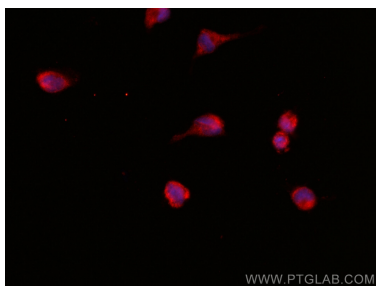
For technical support and original validation data for this product please contact:

T: 1 (888) 4PTGLAB (1-888-478-4522) (toll free in USA), or 1(312) 455-8498 (outside USA)

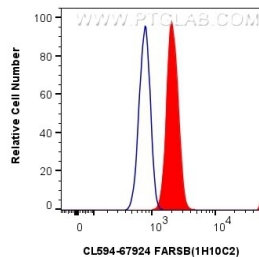
E: [proteintech@ptglab.com](mailto:proteintech@ptglab.com)  
W: [ptglab.com](http://ptglab.com)

This product is exclusively available under Proteintech Group brand and is not available to purchase from any other manufacturer.

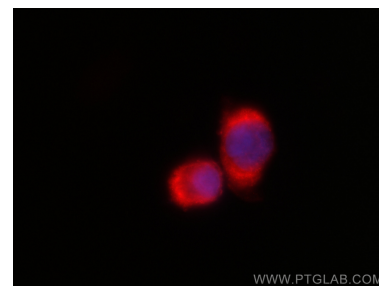
## Selected Validation Data



Immunofluorescent analysis of (-20°C Methanol) fixed U-251 cells using CoraLite® 594 FARSF antibody (CL594-67924, Clone: 1H10C2 ) at dilution of 1:200.



1x10<sup>6</sup> U-251 cells were intracellularly stained with 0.4 ug CoraLite® 594-conjugated FARSF Monoclonal antibody (CL594-67924, Clone:1H10C2)(red), or 0.4 ug CoraLite® 594 Mouse IgG2a isotype control (11A1B2) (CL594-66360-2, Clone: 11A1B2) (blue). Cells were fixed with 4% PFA and permeabilized with Flow Cytometry Perm Buffer (PF00011-C).



Immunofluorescent analysis of (-20°C Methanol) fixed U-251 cells using CoraLite® 594 FARSF antibody (CL594-67924, Clone: 1H10C2 ) at dilution of 1:200.