

For Research Use Only

CoraLite®594-conjugated ABCE1 Monoclonal antibody

Catalog Number:CL594-67960



Basic Information

Catalog Number:

CL594-67960

Size:

100ul , Concentration: 1000 ug/ml by Nanodrop;

Source:

Mouse

Isotype:

IgG2b

Immunogen Catalog Number:

AG28493

GenBank Accession Number:

BC016283

GeneID (NCBI):

6059

UNIPROT ID:

P61221

Full Name:

ATP-binding cassette, sub-family E (OABP), member 1

Calculated MW:

599 aa, 67 kDa

Observed MW:

68 kDa

Purification Method:

Protein A purification

CloneNo.:

1B7E8

Recommended Dilutions:

IF/ICC 1:50-1:500

Excitation/Emission maxima wavelengths:

588 nm / 604 nm

Applications

Tested Applications:

IF/ICC, FC (Intra)

Species Specificity:

human, mouse, rat

Positive Controls:

IF/ICC : HeLa cells,

Background Information

ABCE1 is an ATPase that is a member of the ATP-binding cassette (ABC) transporters superfamily and OABP subfamily, it is an essential and highly conserved protein that is required for both eukaryotic translation initiation as well as ribosome biogenesis.

Storage

Storage:

Store at -20°C. Avoid exposure to light. Stable for one year after shipment.

Storage Buffer:

PBS with 50% Glycerol, 0.05% Proclin300, 0.5% BSA, pH 7.3.

Aliquoting is unnecessary for -20°C storage

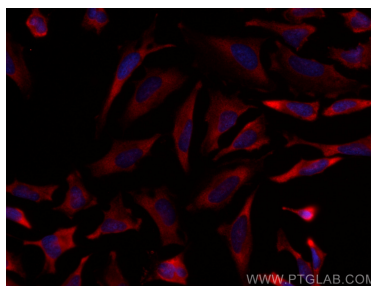
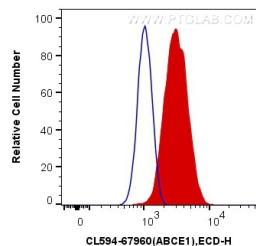
For technical support and original validation data for this product please contact:

T: 1 (888) 4PTGLAB (1-888-478-4522) (toll free in USA), or 1(312) 455-8498 (outside USA)

E: proteintech@ptglab.com
W: ptglab.com

This product is exclusively available under Proteintech Group brand and is not available to purchase from any other manufacturer.

Selected Validation Data



1X10⁶ HeLa cells were intracellularly stained with 0.4 ug CoraLite®594 Anti-Human ABCE1 (CL594-67960, Clone:1B7E8) (red), or 0.4 ug Mouse IgG2b Isotype Control (CL594-66360-3, Clone: K11B8C4B5) (blue). Cells were fixed with 4% PFA and permeabilized with Flow Cytometry Perm Buffer (PF00011-C).

Immunofluorescent analysis of (-20°C Methanol) fixed HeLa cells using CoraLite®594 ABCE1 antibody (CL594-67960, Clone: 1B7E8) at dilution of 1:200.