

For Research Use Only

CoraLite®594-conjugated RALY Monoclonal antibody

Catalog Number:CL594-68011



Basic Information

Catalog Number: CL594-68011	GenBank Accession Number: BC103753	Purification Method: Protein G purification
Size: 100ul , Concentration: 1000 ug/ml by Nanodrop;	GeneID (NCBI): 22913	CloneNo.: 2B10C3
Source: Mouse	UNIPROT ID: Q9UKM9	Recommended Dilutions: IF/ICC 1:50-1:500
Isotype: IgG1	Full Name: RNA binding protein, autoantigenic (hnRNP-associated with lethal yellow homolog (mouse))	Excitation/Emission maxima wavelengths: 588 nm / 604 nm
Immunogen Catalog Number: AG12250	Calculated MW: 307 aa, 33 kDa	
	Observed MW: 37 kDa	

Applications

Tested Applications: IF/ICC, FC (Intra)	Positive Controls: IF/ICC : A431 cells,
Species Specificity: Human	

Background Information

RNA-binding protein RALY is a protein that in humans is encoded by the RALY gene. In infectious mononucleosis, anti-EBNA-1 antibodies are produced which cross-react with multiple normal human proteins. The cross-reactivity is due to anti-gly/ala antibodies that cross-react with host proteins containing configurations like those in the EBNA-1 repeat. One such antigen is RALY which is a member of the heterogeneous nuclear ribonucleoprotein gene family.

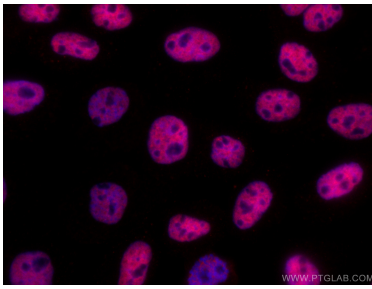
Storage

Storage:
Store at -20°C. Avoid exposure to light. Stable for one year after shipment.
Storage Buffer:
PBS with 50% Glycerol, 0.05% Proclin300, 0.5% BSA, pH 7.3.
Aliquoting is unnecessary for -20°C storage

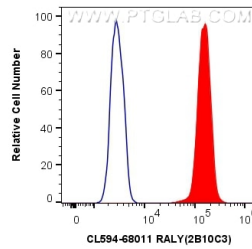
For technical support and original validation data for this product please contact:
T: 1 (888) 4PTGLAB (1-888-478-4522) (toll free in USA), or 1(312) 455-8498 (outside USA)
E: proteintech@ptglab.com
W: ptglab.com

This product is exclusively available under Proteintech Group brand and is not available to purchase from any other manufacturer.

Selected Validation Data



Immunofluorescent analysis of (4% PFA) fixed A431 cells using CoraLite®594 RALY antibody (CL594-68011, Clone: 2B10C3) at dilution of 1:200.



1X10⁶ A431 cells were intracellularly stained with 0.4 ug CoraLite®594 Anti-Human RALY (CL594-68011, Clone:2B10C3) (red), or 0.4 ug CoraLite®594 Mouse IgG1 Isotype Control (MOPC-21) (CL594-65124, Clone: MOPC-21) (blue). Cells were fixed and permeabilized with Transcription Factor Staining Buffer Kit (PF00011).