

For Research Use Only

CoraLite®594-conjugated RPL9 Monoclonal antibody

Catalog Number:CL594-68054



Basic Information

Catalog Number:

CL594-68054

Size:

100ul , Concentration: 1000 ug/ml by

Nanodrop;

Source:

Mouse

Isotype:

IgG1

Immunogen Catalog Number:

AG5391

GenBank Accession Number:

BC066318

GeneID (NCBI):

6133

UNIPROT ID:

P32969

Full Name:

ribosomal protein L9

Calculated MW:

22 kDa

Observed MW:

22 kDa

Purification Method:

Protein G purification

CloneNo.:

2A6B11

Recommended Dilutions:

IF-P 1:50-1:500

Excitation/Emission maxima

wavelengths:

588 nm / 604 nm

Applications

Tested Applications:

IF-P

Species Specificity:

Human, Mouse, Rat

Positive Controls:

IF-P : mouse cerebellum tissue,

Storage

Storage:

Store at -20°C. Avoid exposure to light. Stable for one year after shipment.

Storage Buffer:

PBS with 50% Glycerol, 0.05% Proclin300, 0.5% BSA, pH 7.3.

Aliquoting is unnecessary for -20°C storage

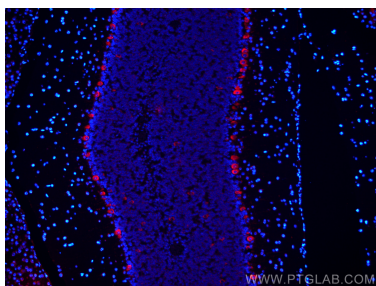
For technical support and original validation data for this product please contact:

T: 1 (888) 4PTGLAB (1-888-478-4522) (toll free
in USA), or 1(312) 455-8498 (outside USA)

E: proteintech@ptglab.com
W: ptglab.com

This product is exclusively available under Proteintech
Group brand and is not available to purchase from any
other manufacturer.

Selected Validation Data



Immunofluorescent analysis of (4% PFA) fixed mouse cerebellum tissue using CoraLite®594 RPL9 antibody (CL594-68054, Clone: 2A6B11) at dilution of 1:200.