

For Research Use Only

# CoraLite®594-conjugated CCT2 Monoclonal antibody

Catalog Number: CL594-68214



## Basic Information

### Catalog Number:

CL594-68214

### Size:

100ul , Concentration: 1000 ug/ml by Nanodrop;

### Source:

Mouse

### Isotype:

IgG1

### Immunogen Catalog Number:

AG19264

### GenBank Accession Number:

BC113516

### GeneID (NCBI):

10576

### UNIPROT ID:

P78371

### Full Name:

chaperonin containing TCP1, subunit 2 (beta)

### Calculated MW:

535 aa, 57 kDa

### Observed MW:

50-58 kDa

### Purification Method:

Protein G purification

### CloneNo.:

2H6C7

### Recommended Dilutions:

IF/ICC 1:50-1:500

### Excitation/Emission maxima

wavelengths:

588 nm / 604 nm

## Applications

### Tested Applications:

IF/ICC, FC (Intra)

### Species Specificity:

human, mouse, rat, pig, rabbit

### Positive Controls:

IF/ICC : NIH/3T3 cells,

## Background Information

CCT2 is a gene encoding a molecular chaperone that is a member of the chaperonin containing TCP1 complex (CCT), also known as the TCP1 ring complex (TRiC). The switch of CCT2's role from a chaperonin to a specific aggregophagy receptor is achieved by CCT2 monomer formation. CCT2 functions independently of ubiquitin and the TRiC complex to facilitate the autophagic clearance of solid protein aggregates. CCT2 has 2 isoforms with the molecular mass of 53 and 57 kDa. (PMID: 35699934)

## Storage

### Storage:

Store at -20°C. Avoid exposure to light. Stable for one year after shipment.

### Storage Buffer:

PBS with 50% Glycerol, 0.05% Proclin300, 0.5% BSA, pH 7.3.

Aliquoting is unnecessary for -20°C storage

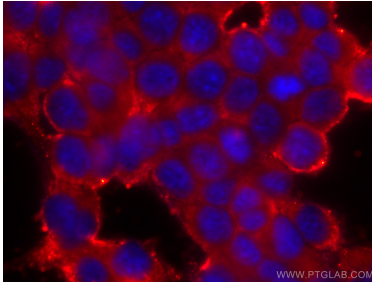
For technical support and original validation data for this product please contact:

T: 1 (888) 4PTGLAB (1-888-478-4522) (toll free in USA), or 1(312) 455-8498 (outside USA)

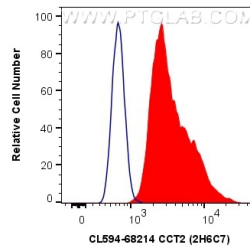
E: [proteintech@ptglab.com](mailto:proteintech@ptglab.com)  
W: [ptglab.com](http://ptglab.com)

This product is exclusively available under Proteintech Group brand and is not available to purchase from any other manufacturer.

## Selected Validation Data



Immunofluorescent analysis of (-20°C Methanol) fixed NIH/3T3 cells using CoraLite®594 CCT2 antibody (CL594-68214, Clone: 2H6C7) at dilution of 1:200.



1X10<sup>6</sup> NIH/3T3 cells were intracellularly stained with 0.5 ug CoraLite®594 Anti-Human CCT2 (CL594-68214, Clone:2H6C7) (red), or 0.5 ug CoraLite®594 Mouse IgG1 Isotype Control (MOPC-21) (CL594-65124, Clone: MOPC-21) (blue). Cells were fixed with 4% PFA and permeabilized with Flow Cytometry Perm Buffer (PF00011-C).