

For Research Use Only

CoraLite®594-conjugated LC3 Recombinant antibody



Catalog Number: CL594-81004

Featured Product

Basic Information

Catalog Number: CL594-81004	GenBank Accession Number: BC067797	Purification Method: Protein A purification
Size: 100ul , Concentration: 1000 µg/ml by Nanodrop;	GeneID (NCBI): 81631	CloneNo.: 5P12
Source: Rabbit	Full Name: microtubule-associated protein 1 light chain 3 beta	Recommended Dilutions: IF 1:250-1:1000
Isotype: IgG	Calculated MW: 15 kDa	Excitation/Emission maximum wavelengths: 588 nm / 604 nm
Immunogen Catalog Number: AG6144	Observed MW: 14-18 kDa	

Applications

Tested Applications: IF	Positive Controls: IF : Chloroquine treated HepG2 cells,
Species Specificity: Human, Mouse, Rat, Pig	

Background Information

Map1LC3, also known as LC3, is the human homolog of yeast Atg8 and is involved in the formation of autophagosomal vacuoles, called autophagosomes. Three human Map1LC3 isoforms, MAP1LC3A, MAP1LC3B, and MAP1LC3C, undergo post-translational modifications during autophagy. And they differ in their post-translational modifications during autophagy. Map1LC3 also exists in two modified forms, an 18 kDa cytoplasmic form that was originally identified as a subunit of the microtubule-associated protein 1, and a 14-16 kDa form that is associated with the autophagosome membrane.

Storage

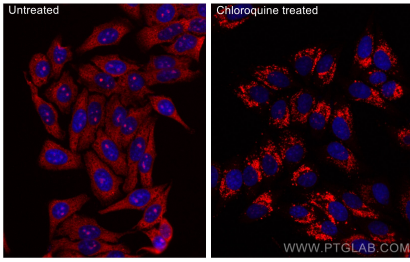
Storage:
Store at -20°C. Avoid exposure to light. Stable for one year after shipment.
Storage Buffer:
PBS with 50% Glycerol, 0.05% Proclin300, 0.5% BSA, pH 7.3.
Aliquoting is unnecessary for -20°C storage

*** 20ul sizes contain 0.1% BSA

For technical support and original validation data for this product please contact:
T: 1 (888) 4PTGLAB (1-888-478-4522) (toll free in USA), or 1(312) 455-8498 (outside USA)
E: proteintech@ptglab.com
W: ptglab.com

This product is exclusively available under Proteintech Group brand and is not available to purchase from any other manufacturer.

Selected Validation Data



Immunofluorescent analysis of (-20°C Methanol) fixed Chloroquine treated HepG2 cells using CoraLite®594 LC3 antibody (CL594-81004, Clone: 5P12) at dilution of 1:500.