

For Research Use Only

# CoraLite®594-conjugated Talin-1 Recombinant antibody

Catalog Number: CL594-82856-18

Featured Product



## Basic Information

Catalog Number:

CL594-82856-18

Size:

100ul , Concentration: 1000 ug/ml by Nanodrop;

Source:

Rabbit

Isotype:

IgG

Immunogen Catalog Number:

AG5367

GenBank Accession Number:

BC042923

GeneID (NCBI):

7094

UNIPROT ID:

Q9Y490

Full Name:

talin 1

Calculated MW:

2541 aa, 270 kDa

Purification Method:

Protein A purification

CloneNo.:

240294G5

Recommended Dilutions:

IF/ICC 1:50-1:500

Excitation/Emission maxima

wavelengths:

588 nm / 604 nm

## Applications

Tested Applications:

IF/ICC

Species Specificity:

human

Positive Controls:

IF/ICC : A549 cells,

## Background Information

Talin-1 is a large cytoskeletal protein consisting of a globular head domain and a long rod comprised of a series of  $\alpha$ -helical bundles (PMID: 35266014). Talin-1 is ubiquitously expressed and is a major component of focal adhesions which are multi-protein, integrin-containing complexes, mediating cell migration, adhesion and integrin signalling (PMID: 33431906). Talin-1 also plays a role in tumor formation, migration and metastasis in various malignancies (PMID: 37013489).

## Storage

Storage:

Store at -20°C. Avoid exposure to light. Stable for one year after shipment.

Storage Buffer:

PBS with 50% Glycerol, 0.05% Proclin300, 0.5% BSA, pH 7.3.

Aliquoting is unnecessary for -20°C storage

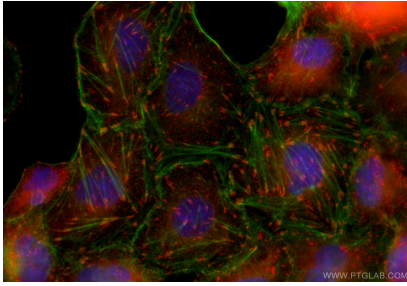
For technical support and original validation data for this product please contact:

T: 1 (888) 4PTGLAB (1-888-478-4522) (toll free in USA), or 1(312) 455-8498 (outside USA)

E: [proteintech@ptglab.com](mailto:proteintech@ptglab.com)  
W: [ptglab.com](http://ptglab.com)

This product is exclusively available under Proteintech Group brand and is not available to purchase from any other manufacturer.

## Selected Validation Data



Immunofluorescent analysis of (4% PFA) fixed A549 cells using CoraLite®594 Talin-1 antibody (CL594-82856-18, Clone: 240294G5 ) at dilution of 1:200, CL488-phalloidin (green).