

For Research Use Only

CoraLite®594-conjugated Cytochrome c Recombinant antibody

Catalog Number:CL594-83276

Featured Product



Basic Information

Catalog Number:

CL594-83276

Size:

100ul , Concentration: 1000 µg/ml by Nanodrop;

Source:

Rabbit

Isotype:

IgG

Immunogen Catalog Number:

AG1455

GenBank Accession Number:

BC009578

GeneID (NCBI):

54205

UNIPROT ID:

P99999

Full Name:

cytochrome c, somatic

Calculated MW:

12 kDa

Observed MW:

12-15 kDa

Purification Method:

Protein A purification

CloneNo.:

230503E10

Recommended Dilutions:

IF/ICC 1:50-1:500

Excitation/Emission maxima wavelengths:

588 nm / 604 nm

Applications

Tested Applications:

IF/ICC

Species Specificity:

human, mouse

Positive Controls:

IF/ICC : A431 cells, MCF-7

Background Information

Cytochrome c is a 12-15 kDa electron transporting protein located in the inner mitochondrial membrane. As a part of respiratory chain, cytochrome c plays a critical role in the process of oxidative phosphorylation and ATP producing. Besides, cytochrome c also gets implicated in apoptosis process. Upon apoptotic stimulation, cytochrome c can be released from mitochondria into cytoplasm, which is required for caspase-3 activation and the occurrence of apoptosis.

Storage

Storage:

Store at -20°C. Avoid exposure to light. Stable for one year after shipment.

Storage Buffer:

PBS with 50% Glycerol, 0.05% Proclin300, 0.5% BSA, pH 7.3.

Aliquoting is unnecessary for -20°C storage

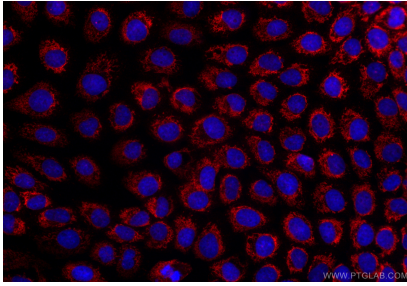
For technical support and original validation data for this product please contact:

T: 1 (888) 4PTGLAB (1-888-478-4522) (toll free in USA), or 1(312) 455-8498 (outside USA)

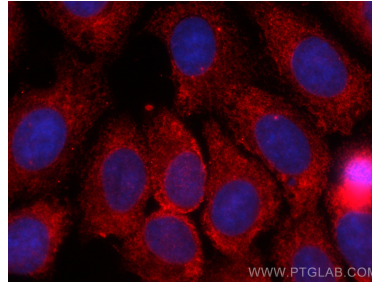
E: proteintech@ptglab.com
W: ptglab.com

This product is exclusively available under Proteintech Group brand and is not available to purchase from any other manufacturer.

Selected Validation Data



Immunofluorescent analysis of (4% PFA) fixed A431 cells using CoraLite®594 Cytochrome c antibody (CL594-83276, Clone: 230503E10) at dilution of 1:200.



Immunofluorescent analysis of (-20°C Methanol) fixed MCF-7 cells using CoraLite®594 Cytochrome c antibody (CL594-83276, Clone: 230503E10) at dilution of 1:200.