

For Research Use Only

CoraLite®594-conjugated CD206 Recombinant monoclonal antibody

Catalog Number:CL594-83485



Basic Information

Catalog Number: CL594-83485	GenBank Accession Number: NM_008625.2	Purification Method: Protein A purification
Size: 100ul , Concentration: 1000 ug/ml by Nanodrop;	GeneID (NCBI): 17533	CloneNo.: 240344B9
Source: Rabbit	UNIPROT ID: Q2HZ94	Recommended Dilutions: IF-P: 1:50-1:500
Isotype: IgG	Full Name: mannose receptor, C type 1	Excitation/Emission maxima wavelengths: 588 nm / 604 nm
Immunogen Catalog Number: EG0790	Calculated MW: 165 kDa	
	Observed MW: 200 kDa	

Applications

Tested Applications: IF-P	Positive Controls: IF-P : mouse spleen tissue,
Species Specificity: mouse, rat	

Background Information

CD206, also named as MMR, CLEC13D and MRC1, is a type I membrane receptor that mediates the endocytosis of glycoproteins by macrophages. CD206 has been shown to bind high-mannose structures on the surface of potentially pathogenic viruses, bacteria, and fungi so that they can be neutralized by phagocytic engulfment. CD206 is a transmembrane protein which contains 5 domains: an amino-terminal cysteine-rich region, a fibronectin type II repeat, a series of eight tandem lectin-like carbohydrate recognition domains (responsible for the recognition of mannose and fucose), a transmembrane domain, and an intracellular carboxy-terminal tail. It is expressed on most tissue macrophages, in vitro derived dendritic cells, lymphatic and sinusoidal endothelia.

Storage

Storage:
Store at -20°C. Avoid exposure to light. Stable for one year after shipment.
Storage Buffer:
PBS with 50% glycerol, 0.05% Proclin300, 0.5% BSA, pH7.3
Aliquoting is unnecessary for -20°C storage

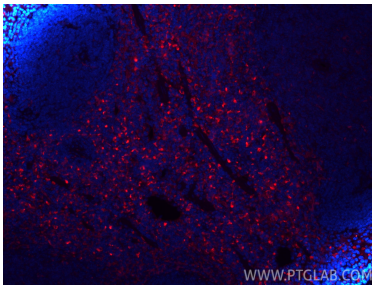
For technical support and original validation data for this product please contact:

T: 1 (888) 4PTGLAB (1-888-478-4522) (toll free
in USA), or 1(312) 455-8498 (outside USA)

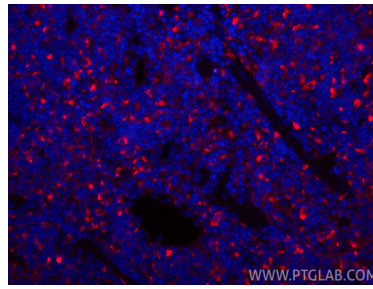
E: proteintech@ptglab.com
W: ptglab.com

This product is exclusively available under Proteintech Group brand and is not available to purchase from any other manufacturer.

Selected Validation Data



Immunofluorescent analysis of (4% PFA) fixed paraffin-embedded mouse spleen tissue using CoraLite®594 CD206 antibody (CL594-83485, Clone: 240344B9) at dilution of 1:200. Heat mediated antigen retrieval with Tris-EDTA buffer (pH 9.0).



Immunofluorescent analysis of (4% PFA) fixed paraffin-embedded mouse spleen tissue using CoraLite®594 CD206 antibody (CL594-83485, Clone: 240344B9) at dilution of 1:200. Heat mediated antigen retrieval with Tris-EDTA buffer (pH 9.0).