

For Research Use Only

# CoraLite®594-conjugated TFEB Recombinant monoclonal antibody

Catalog Number:CL594-84675-5



## Basic Information

<b>Catalog Number:</b> CL594-84675-5	<b>GenBank Accession Number:</b> BC032448	<b>Purification Method:</b> Protein A purification
<b>Size:</b> 100ul , Concentration: 1000 ug/ml by Nanodrop;	<b>GeneID (NCBI):</b> 7942	<b>CloneNo.:</b> 242093D11
<b>Source:</b> Rabbit	<b>UNIPROT ID:</b> P19484	<b>Recommended Dilutions:</b> IF/ICC: 1:50-1:500
<b>Isotype:</b> IgG	<b>Full Name:</b> transcription factor EB	<b>Excitation/Emission maxima wavelengths:</b> 588 nm / 604 nm
<b>Immunogen Catalog Number:</b> AG4194	<b>Calculated MW:</b> 476 aa, 53 kDa	
	<b>Observed MW:</b> 65-70 kDa	

## Applications

<b>Tested Applications:</b> IF/ICC	<b>Positive Controls:</b> IF/ICC : HeLa cells,
<b>Species Specificity:</b> human, mouse	

## Background Information

Transcription factor EB(TFEB) is one of the transcription factors that contain a basic HLH-ZIP domain(for DNA binding ) and HLH and ZIP domains( for loigomerization). TFEB specifically recognizes and binds to E-box sequences, which required dimerization with itself or another MiT/TFE family member. It plays a role in T-cell-dependent antibody responses to activated CD4+ T-cells and thymus-dependent humoral immunity once associated with TFE3. It also activates lysosomal gene by binding the CLEAR-box sequence in the regulatory region. It involves in the signal transduction processes required for normal vascularization of the placenta. This is a rabbit polyclonal antibody raised against the full length of human TFEB. The calculated molecular weight of TFEB is 53 kDa, but modified TFEB is about 65-70 kDa (PMID: 12837690). TFEB mainly present in the cytoplasm (PubMed:23434374). Under aberrant lysosomal storage conditions, it translocates from the cytoplasm to the nucleus (PubMed:23434374). Fisetin increases the levels of TFEB localized in nuclei (PMID: 27112200).

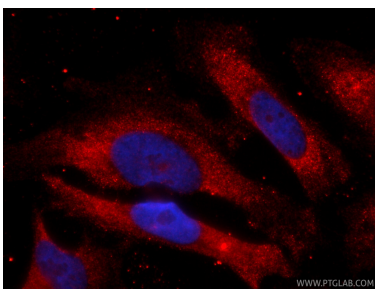
## Storage

**Storage:**  
Store at -20°C. Avoid exposure to light. Stable for one year after shipment.  
**Storage Buffer:**  
PBS with 50% glycerol, 0.05% Proclin300, 0.5% BSA, pH7.3  
**Aliquoting is unnecessary for -20°C storage**

For technical support and original validation data for this product please contact:  
T: 1 (888) 4PTGLAB (1-888-478-4522) (toll free in USA), or 1(312) 455-8498 (outside USA)  
E: proteintech@ptglab.com  
W: ptglab.com

**This product is exclusively available under Proteintech Group brand and is not available to purchase from any other manufacturer.**

## Selected Validation Data



Immunofluorescent analysis of (-20°C Ethanol) fixed HeLa cells using Coralite® 594 TFE8 antibody (CL594-84675-5, Clone: 242093D11) at dilution of 1:200.