

For Research Use Only

CoraLite®594-conjugated KTN1 Recombinant antibody

Catalog Number:CL594-85681-4



Basic Information

Catalog Number: CL594-85681-4	GenBank Accession Number: BC117132	Purification Method: Protein A purification
Size: 100ul , Concentration: 1000 ug/ml by Nanodrop;	GeneID (NCBI): 3895	CloneNo.: 243067A11
Source: Rabbit	UNIPROT ID: Q86UP2	Recommended Dilutions: IF/ICC: 1:50-1:500
Isotype: IgG	Full Name: kinectin 1 (kinesin receptor)	Excitation/Emission maxima wavelengths: 588 nm / 604 nm
Immunogen Catalog Number: AG13854	Calculated MW: 1357 aa, 156 kDa	
	Observed MW: 156 kDa	

Applications

Tested Applications: IF/ICC	Positive Controls: IF/ICC : HepG2 cells, SKOV-3 cells
Species Specificity: human	

Background Information

KTN1/Kinectin is an integral endoplasmic reticulum (ER) membrane protein which acts as dynamic anchor to facilitate ER membrane extension along microtubules. It has been found to bind kinesin, Rho GTPase, and translation elongation factor-1delta and gets involved in organelle motility and protein synthesis.

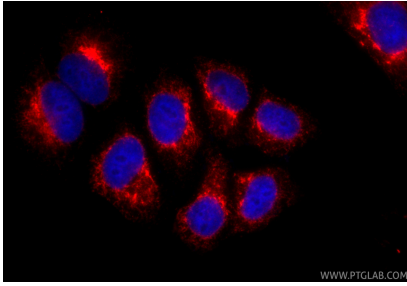
Storage

Storage:
Store at -20°C. Avoid exposure to light. Stable for one year after shipment.
Storage Buffer:
PBS with 50% glycerol, 0.05% Proclin300, 0.5% BSA, pH7.3
Aliquoting is unnecessary for -20°C storage

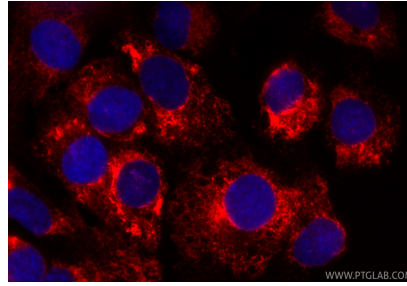
For technical support and original validation data for this product please contact:
T: 1 (888) 4PTGLAB (1-888-478-4522) (toll free in USA), or 1(312) 455-8498 (outside USA)
E: proteintech@ptglab.com
W: ptglab.com

This product is exclusively available under Proteintech Group brand and is not available to purchase from any other manufacturer.

Selected Validation Data



Immunofluorescent analysis of (-20°C Ethanol) fixed HepG2 cells using CoraLite®594 KTN1 antibody (CL594-85681-4, Clone: 243067A11) at dilution of 1:200.



Immunofluorescent analysis of (4% PFA) fixed SKOV-3 cells using CoraLite®594 KTN1 antibody (CL594-85681-4, Clone: 243067A11) at dilution of 1:200.