

For Research Use Only

CoraLite®594-conjugated LPP Recombinant monoclonal antibody

Catalog Number:CL594-86117-3



Basic Information

Catalog Number: CL594-86117-3	GenBank Accession Number: BC130584	Purification Method: Protein A purification
Size: 100ul , Concentration: 1000 ug/ml by Nanodrop;	GeneID (NCBI): 4026	CloneNo.: 250773C9
Source: Rabbit	UNIPROT ID: Q93052	Recommended Dilutions: IF/ICC: 1:50-1:500
Isotype: IgG	Full Name: LIM domain containing preferred translocation partner in lipoma	Excitation/Emission maxima wavelengths: 588 nm / 604 nm
Immunogen Catalog Number: AG19205	Calculated MW: 612 aa, 66 kDa	
	Observed MW: 70-75 kDa	

Applications

Tested Applications: IF/ICC	Positive Controls: IF/ICC : A549 cells, HeLa cells
Species Specificity: human, mouse, rat	

Background Information

LPP is a member of a subfamily of LIM domain proteins. Its characteristic is that the N-terminal region is rich in proline, and it has three C-terminal LIM domains. LPP localizes to the cell periphery in focal adhesions and may be involved in cell-cell adhesion and cell motility(PMID: 10637295). LPP is located at the junction of certain disease-related chromosomal translocations, which result in the expression of chimeric proteins that may promote tumor growth(PMID: 12581855).

Storage

Storage:
Store at -20°C. Avoid exposure to light. Stable for one year after shipment.
Storage Buffer:
PBS with 50% glycerol, 0.05% Proclin300, 0.5% BSA, pH7.3
Aliquoting is unnecessary for -20°C storage

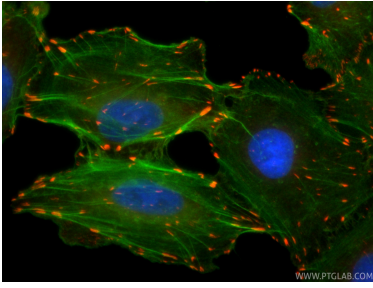
For technical support and original validation data for this product please contact:

T: 1 (888) 4PTGLAB (1-888-478-4522) (toll free
in USA), or 1(312) 455-8498 (outside USA)

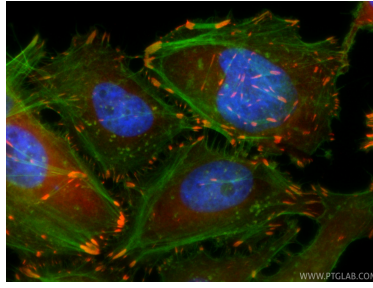
E: proteintech@ptglab.com
W: ptglab.com

This product is exclusively available under Proteintech Group brand and is not available to purchase from any other manufacturer.

Selected Validation Data



Immunofluorescent analysis of (4% PFA) fixed A549 cells using CoraLite@594 LPP antibody (CL594-86117-3, Clone: 250773C9) at dilution of 1:200, CL488-phalloidin (green).



Immunofluorescent analysis of (4% PFA) fixed HeLa cells using CoraLite@594 LPP antibody (CL594-86117-3, Clone: 250773C9) at dilution of 1:200, CL488-phalloidin (green).