

For Research Use Only

# CoraLite®594 Anti-Mouse TLR4/CD284 Rabbit Recombinant Antibody

Catalog Number: CL594-98018



## Basic Information

Catalog Number:

CL594-98018

Size:

100ug , 500 µg/ml

Source:

Rabbit

Isotype:

IgG

Immunogen Catalog Number:

AG32998

GenBank Accession Number:

NM\_021297

GeneID (NCBI):

21898

UNIPROT ID:

Q9QUK6

Full Name:

toll-like receptor 4

Calculated MW:

96 kDa

Purification Method:

Protein A purification

CloneNo.:

230463C7

Excitation/Emission maxima wavelengths:

588 nm / 604 nm

## Applications

Tested Applications:

FC

Species Specificity:

mouse

Positive Controls:

FC : Balb/c mouse peritoneal macrophages,

## Background Information

TLR4, also named as CD284, belongs to the Toll-like receptor family. TLR4 interacts with LY96 and CD14 to mediate the innate immune response to bacterial lipopolysaccharide (LPS). TLR4 acts via MYD88, TIRAP and TRAF6, leading to NF-κB activation, cytokine secretion and the inflammatory response. Three alternatively spliced transcript variants that encode different protein isoforms have been described.

## Storage

Storage:

Store at 2-8°C. Avoid exposure to light. Stable for one year after shipment.

Storage Buffer:

PBS with 0.09% sodium azide, pH7.3

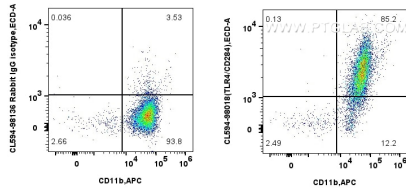
For technical support and original validation data for this product please contact:

T: 1 (888) 4PTGLAB (1-888-478-4522) (toll free in USA), or 1(312) 455-8498 (outside USA)

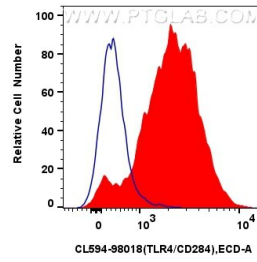
E: [proteintech@ptglab.com](mailto:proteintech@ptglab.com)  
W: [ptglab.com](http://ptglab.com)

This product is exclusively available under Proteintech Group brand and is not available to purchase from any other manufacturer.

## Selected Validation Data



1x10<sup>6</sup> Balb/c mouse peritoneal macrophages were surface stained with CoraLite® Plus 647 Anti-Mouse CD11b (M1/70), and 0.25 ug CoraLite® 594 Anti-Mouse TLR4/CD284 Rabbit Recombinant Antibody (CL594-98018, Clone: 230463C7) or 0.25 ug CoraLite® 594 Rabbit IgG Isotype Control Recombinant Antibody (CL594-98136, Clone: 240953C9). Cells were incubated with FC Receptor Block prior to staining. Cells were not fixed.



1x10<sup>6</sup> Balb/c mouse peritoneal macrophages were surface stained with 0.25 ug CoraLite® 594 Anti-Mouse TLR4/CD284 Rabbit Recombinant Antibody (CL594-98018, Clone: 230463C7) (red) or 0.25 ug CoraLite® 594 Rabbit IgG Isotype Control Recombinant Antibody (CL594-98136, Clone: 240953C9) (blue). Cells were incubated with FC Receptor Block prior to staining. Cells were not fixed.