

For Research Use Only

CoraLite®594 Anti-Mouse IL-1 alpha Rabbit Recombinant Antibody

Catalog Number: CL594-98052



Basic Information

Catalog Number:

CL594-98052

Size:

100ug , 500 ug/ml

Source:

Rabbit

Isotype:

IgG

Immunogen Catalog Number:

EG0263

GenBank Accession Number:

NM_010554

GeneID (NCBI):

16175

UNIPROT ID:

P01582

Full Name:

interleukin 1 alpha

Calculated MW:

31kd

Purification Method:

Protein A purification

CloneNo.:

240431G10

Recommended Dilutions:

FC (Intra): 0.25 ug per 10⁶ cells in a 100 µl suspension

Excitation/Emission maxima wavelengths:

588 nm / 604 nm

Applications

Tested Applications:

FC (Intra)

Species Specificity:

mouse

Positive Controls:

FC (Intra) : LPS treated RAW 264.7 cells,

Background Information

IL-1 alpha is a dual function cytokine that can function both as a transcription factor and a damage-associated molecular pattern (DAMP) in innate immune responses. It is expressed by many cell types and its expression is increased when cells are exposed to growth factors, pro-inflammatory, and stress-related signals. In its pro-form, IL-1 alpha contains a nuclear localization signal that allows it to translocate to the nucleus and bind to DNA, resulting in either the increase or prohibition of pro-inflammatory cytokine expression. When cells are exposed to necrotic signals, mature IL-1 alpha is released from the cell lysates and triggers a strong pro-inflammatory response upon binding to its receptor on nearby cells. Due to its strongly pro-inflammatory nature, IL-1 alpha has been linked to tumor metastasis and lower median survival in several cancers (PMID: 27434011, 29247995).

Storage

Storage:

Store at 2-8°C. Avoid exposure to light. Stable for one year after shipment.

Storage Buffer:

PBS with 0.09% sodium azide, pH7.3

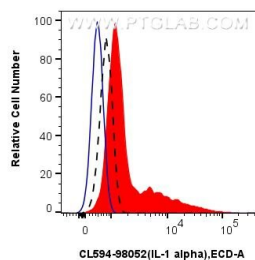
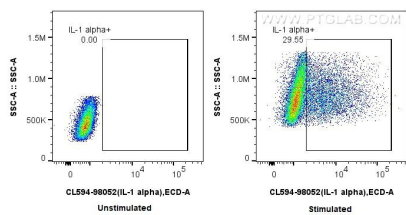
For technical support and original validation data for this product please contact:

T: 1 (888) 4PTGLAB (1-888-478-4522) (toll free in USA), or 1(312) 455-8498 (outside USA)

E: proteintech@ptglab.com
W: ptglab.com

This product is exclusively available under Proteintech Group brand and is not available to purchase from any other manufacturer.

Selected Validation Data



1x10⁶ untreated or LPS-treated RAW 264.7 cells were intracellularly stained with 0.25 ug CoraLite®594 Anti-Mouse IL-1 alpha Rabbit RecAb (CL594-98052, Clone: 240431G10). Cells were fixed and permeabilized with True-Nuclear Transcription Factor Buffer Set.

1x10⁶ LPS-treated RAW 264.7 cells were intracellularly stained with 0.25 ug CoraLite®594 Anti-Mouse IL-1 alpha Rabbit RecAb (CL594-98052, Clone: 240431G10) (red) or 0.25 ug CoraLite®594 Rabbit IgG Isotype Control RecAb (CL594-98136, Clone: 240953C9) (blue). 1x10⁶ untreated RAW 264.7 cells were intracellularly stained with 0.25 ug CoraLite®594 Anti-Mouse IL-1 alpha Rabbit RecAb (CL594-98052, Clone: 240431G10)(black, dashed). Cells were fixed

