

For Research Use Only

CoraLite®594 Anti-Human IL-6 Rabbit Recombinant Antibody

Catalog Number:CL594-98087



Basic Information

Catalog Number:

CL594-98087

Size:

100tests , 5 ul/test

Source:

Rabbit

Isotype:

IgG

GenBank Accession Number:

BC015511

GeneID (NCBI):

3569

ENSEMBL Gene ID:

ENSG00000136244

UNIPROT ID:

P05231

Full Name:

interleukin 6 (interferon, beta 2)

Calculated MW:

212 aa, 24 kDa

Purification Method:

Protein A purification

CloneNo.:

240670D12

Excitation/Emission maxima

wavelengths:

588 nm / 604 nm

Applications

Tested Applications:

FC (Intra)

Species Specificity:

human

Background Information

Interleukin-6 (IL-6) is an interleukin that acts as both a pro-inflammatory and anti-inflammatory cytokine. IL-6 protein is secreted by a variety of cell types including T cells and macrophages as phosphorylated and variably glycosylated molecule. IL-6 plays an essential role in the final differentiation of B-cells into Ig-secreting cells involved in lymphocyte and monocyte differentiation. It induces myeloma and plasmacytoma growth and induces nerve cells differentiation Acts on B-cells, T-cells, hepatocytes, hematopoietic progenitor cells and cells of the CNS. IL-6 is also considered a myokine, a cytokine produced from muscle, and is elevated in response to muscle contraction. IL-6 has been shown to interact with interleukin-6 receptor and glycoprotein 130. Additionally, IL-6 is involved in hematopoiesis, bone metabolism, and cancer progression, and has been defined an essential role in directing transition from innate to acquired immunity.

Storage

Storage:

Store at 2-8°C. Avoid exposure to light. Stable for one year after shipment.

Storage Buffer:

PBS with 0.09% sodium azide and 0.5% BSA

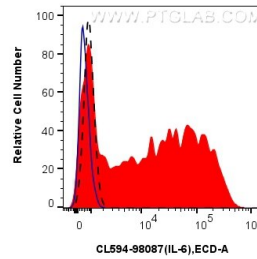
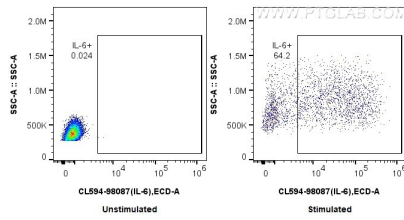
For technical support and original validation data for this product please contact:

T: 1 (888) 4PTGLAB (1-888-478-4522) (toll free in USA), or 1(312) 455-8498 (outside USA)

E: proteintech@ptglab.com
W: ptglab.com

This product is exclusively available under Proteintech Group brand and is not available to purchase from any other manufacturer.

Selected Validation Data



1x10⁶ untreated or LPS and Brefeldin A treated human PBMCs were intracellularly stained with 5 ul CoraLite®594 Anti-Human IL-6 Rabbit RecAb (CL594-98087, Clone:240670D12). Cells were fixed with 4% PFA and permeabilized with Flow Cytometry Perm Buffer (PF00011-C). Monocytes were gated.

1x10⁶ LPS and Brefeldin A treated human PBMCs were intracellularly stained with 5 ul CoraLite®594 Anti-Human IL-6 Rabbit RecAb (CL594-98087, Clone: 240670D12) (red) or CoraLite®594 Rabbit IgG Isotype Control RecAb (CL594-98136, Clone: 240953C9) (blue). 1x10⁶ untreated human PBMCs were intracellularly stained with 5 ul CoraLite®594 Anti-Human IL-6 Rabbit RecAb (CL594-98087, Clone: 240670D12) (black, dashed). Cells were fixed with 4% PFA and

