

For Research Use Only

CoraLite®594 Anti-Human BTLA/CD272 Rabbit Recombinant Antibody

Catalog Number: CL594-98096



Basic Information

Catalog Number:

CL594-98096

Size:

100tests , 5 ul/test

Source:

Rabbit

Isotype:

IgG

GenBank Accession Number:

BC107091

GeneID (NCBI):

151888

UNIPROT ID:

Q7Z6A9

Full Name:

B and T Lymphocyte associated

Calculated MW:

289 aa, 33 kDa

Purification Method:

Protein A purification

CloneNo.:

241318H5

Excitation/Emission maxima
wavelengths:

588 nm / 604 nm

Applications

Tested Applications:

FC

Species Specificity:

human

Background Information

BTLA (B and T Lymphocyte attenuator), also known as CD272, is a member of the CD28 superfamily and is a type I membrane glycoprotein identified as an inhibitory receptor (PMID: 33859648). BTLA is extensively expressed in lymph nodes, thymus, and spleen, with little or no expression in organs such as the heart, kidney, brain, and liver (PMID: 33859648). Among immune cells, BTLA is primarily expressed in B and T cells, with higher expression in B cells compared to T cells in the mouse spleen (PMID: 33859648). BTLA plays a crucial role in regulating stimulatory and inhibitory signals in immune responses.

Storage

Storage:

Store at 2-8°C. Avoid exposure to light. Stable for one year after shipment.

Storage Buffer:

PBS with 0.09% sodium azide and 0.5% BSA.

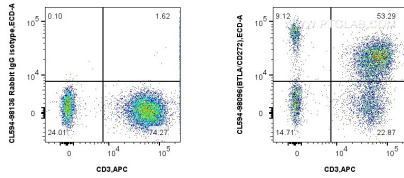
For technical support and original validation data for this product please contact:

T: 1 (888) 4PTGLAB (1-888-478-4522) (toll free
in USA), or 1(312) 455-8498 (outside USA)

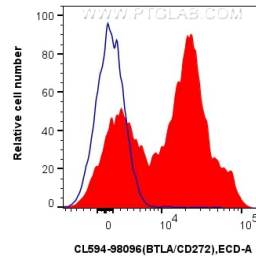
E: proteintech@ptglab.com
W: ptglab.com

This product is exclusively available under Proteintech Group brand and is not available to purchase from any other manufacturer.

Selected Validation Data



1x10⁶ human PBMCs were surface stained with APC Anti-Human CD3 (OKT3) Mouse IgG2a Recombinant Antibody (APC-65569, Clone: OKT3), and 5 ul CoraLite®594 Anti-Human BTLA/CD272 Rabbit RecAb (CL594-98096, Clone: 241318H5) or CoraLite®594 Rabbit IgG Isotype Control RecAb (CL594-98136, Clone: 240953C9). Cells were incubated with FC Receptor Block prior to staining. Cells were not fixed. Lymphocytes were gated.



1x10⁶ human PBMCs were surface stained with 5 ul CoraLite®594 Anti-Human BTLA/CD272 Rabbit RecAb (CL594-98096, Clone: 241318H5) (red) or CoraLite®594 Rabbit IgG Isotype Control RecAb (CL594-98136, Clone: 240953C9) (blue). Cells were incubated with FC Receptor Block prior to staining. Cells were not fixed. Lymphocytes were gated.