

For Research Use Only

CoraLite®594 Anti-Human CD70 Rabbit Recombinant Antibody

Catalog Number: CL594-98098



Basic Information

Catalog Number:

CL594-98098

Size:

100 tests, 5 ul/test

Source:

Rabbit

Isotype:

IgG

GenBank Accession Number:

BC000725

GeneID (NCBI):

970

UNIPROT ID:

P32970

Full Name:

CD70 molecule

Calculated MW:

21 kDa

Purification Method:

Protein A purification

CloneNo.:

241325D8

Excitation/Emission maxima wavelengths:

588 nm / 604 nm

Applications

Tested Applications:

FC

Species Specificity:

human

Background Information

CD70, also known as tumor necrosis factor ligand superfamily member 7 (TNFSF7) or CD27 ligand (CD27L), is a transmembrane protein that plays a significant role in the immune system. It is the unique ligand for CD27, a member of the tumor necrosis factor receptor (TNFR) family, and is transiently upregulated upon stimulation of immune cells. CD70 is expressed on lymphocytes and dendritic cells, and its expression can be regulated by activation signals received via toll-like receptors (TLRs), CD40, and the antigen receptor MHC II. It provides complex and not completely understood signaling for B cell development. CD70 is also expressed on various solid tumors and hematolymphoid malignancies, where it may contribute to a poor prognosis.

Storage

Storage:

Store at 2-8°C. Avoid exposure to light. Stable for one year after shipment.

Storage Buffer:

PBS with 0.09% sodium azide and 0.5% BSA

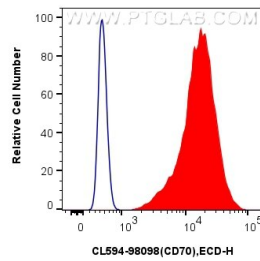
For technical support and original validation data for this product please contact:

T: 1 (888) 4PTGLAB (1-888-478-4522) (toll free in USA), or 1(312) 455-8498 (outside USA)

E: proteintech@ptglab.com
W: ptglab.com

This product is exclusively available under Proteintech Group brand and is not available to purchase from any other manufacturer.

Selected Validation Data



1x10⁶ U266 cells were surface stained with 5 ul CoraLite®594 Anti-Human CD70 Rabbit RecAb (CL594-98098, Clone: 241325D8) (red), or CoraLite®594 Rabbit IgG Isotype Control RecAb (CL594-98136, Clone: 240953C9) (blue). Cells were not fixed.