

For Research Use Only



# CoraLite®594 Anti-Human CRTAM/CD355 Rabbit Recombinant Antibody

Catalog Number:CL594-98157

## Basic Information

Catalog Number:

CL594-98157

Size:

100tests , 5 ul/test

Source:

Rabbit

Isotype:

IgG

Immunogen Catalog Number:

EG1541

GenBank Accession Number:

NM\_019604.4

GeneID (NCBI):

56253

UNIPROT ID:

O95727-1

Full Name:

cytotoxic and regulatory T cell molecule

Calculated MW:

45 kDa

Purification Method:

Protein A purification

CloneNo.:

241280B12

Recommended Dilutions:

FC: 5 ul per 10<sup>6</sup> cells in a 100 µl suspension

Excitation/Emission maxima wavelengths:

588 nm / 604 nm

## Applications

Tested Applications:

FC

Species Specificity:

human

Positive Controls:

FC : PMA and ionomycin treated human PBMCs,

## Background Information

Cytotoxic and regulatory T cell molecule (CRTAM, also known as CD355) is an immunoglobulin-superfamily transmembrane protein with V and C1-like Ig domains, which is involved in epithelial cell adhesion (PMID: 18329370; 20556794). CRTAM is critical to instruct the differentiation of CD4<sup>+</sup> cytotoxic T cells (CTL) through the induction of eomesodermin and CTL-related genes (PMID: 26694968). It also regulates CD8<sup>+</sup> T cell retention within the lymph node and eventually effector function (PMID: 19752223).

## Storage

Storage:

Store at 2-8°C. Avoid exposure to light. Stable for one year after shipment.

Storage Buffer:

PBS with 0.09% sodium azide and 0.5% BSA, pH7.3

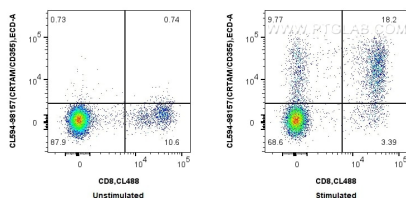
For technical support and original validation data for this product please contact:

T: 1 (888) 4PTGLAB (1-888-478-4522) (toll free in USA), or 1(312) 455-8498 (outside USA)

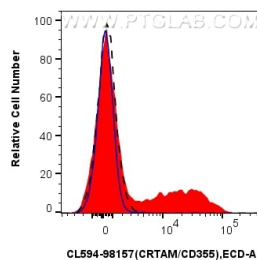
E: [proteintech@ptglab.com](mailto:proteintech@ptglab.com)  
W: [ptglab.com](http://ptglab.com)

This product is exclusively available under Proteintech Group brand and is not available to purchase from any other manufacturer.

## Selected Validation Data



1x10<sup>6</sup> untreated or PMA and ionomycin treated human PBMCs were surface stained with CoraLite® Plus 488 Anti-Human CD8 and 5 ul CoraLite® 594 Anti-Human CRTAM/CD355 Rabbit RecAb (CL594-98157, Clone: 241280B12). Cells were not fixed.



1x10<sup>6</sup> PMA and ionomycin treated human PBMCs were surface stained with 5 ul CoraLite® 594 Anti-Human CRTAM/CD355 Rabbit RecAb (CL594-98157, Clone: 241280B12) (red) or CoraLite® 594 Rabbit IgG Isotype Control RecAb (CL594-98136, Clone: 240953C9) (blue). 1x10<sup>6</sup> untreated human PBMCs were surface stained with 5 ul CoraLite® 594 Anti-Human CRTAM/CD355 Rabbit RecAb (CL594-98157, Clone: 241280B12) (black, dashed). Cells were not

