

For Research Use Only

CoraLite®594 Anti-Mouse CD6 Rabbit Recombinant Antibody

Catalog Number: CL594-98161



Basic Information

Catalog Number:

CL594-98161

Size:

100ug, 500 ug/ml

Source:

Rabbit

Isotype:

IgG

Immunogen Catalog Number:

EG1401

GenBank Accession Number:

NM_009852.3

GeneID (NCBI):

12511

UNIPROT ID:

Q61003-1

Full Name:

CD6 antigen

Calculated MW:

72kDa

Purification Method:

Protein A purification

CloneNo.:

241471F3

Excitation/Emission maxima wavelengths:

588 nm / 604 nm

Applications

Tested Applications:

FC

Species Specificity:

mouse

Background Information

CD6 is a type I transmembrane glycoprotein that belongs to the scavenger receptor cysteine-rich superfamily (PMID: 21880988). It is composed of an extracellular region, which consists of three tandem SRCR domains, a transmembrane region, and a cytoplasmic tail devoid of intrinsic catalytic activity but harboring several phosphorylatable residues suitable for intracellular signal transduction (PMID: 38139340; 23711376). CD6 is expressed by T cells, medullary thymocytes, a subset of B cells and NK cells, and in some cells of the brain (PMID: 1919444; 21178331). CD6 plays a role in lymphocyte activation, proliferation, and survival processes via interaction with its endogenous ligands.

Storage

Storage:

Store at 2-8°C. Avoid exposure to light. Stable for one year after shipment.

Storage Buffer:

PBS with 0.09% sodium azide, pH7.3

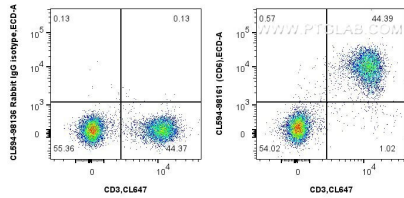
For technical support and original validation data for this product please contact:

T: 1 (888) 4PTGLAB (1-888-478-4522) (toll free in USA), or 1(312) 455-8498 (outside USA)

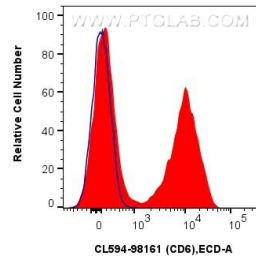
E: proteintech@ptglab.com
W: ptglab.com

This product is exclusively available under Proteintech Group brand and is not available to purchase from any other manufacturer.

Selected Validation Data



1x10⁶ BALB/c mouse splenocytes were surface stained with CoraLite® Plus 647 Anti-Mouse CD3 (17A2) (CL647-65077, Clone: 17A2), and 0.25 ug CoraLite®594 Anti-Mouse CD6 Rabbit RecAb (CL594-98161, Clone: 241471F3) or CoraLite®594 Rabbit IgG Isotype Control RecAb (CL594-98136, Clone: 240953C9). Cells were not fixed.



1x10⁶ BALB/c mouse splenocytes were surface stained with 0.25 ug CoraLite®594 Anti-Mouse CD6 Rabbit RecAb (CL594-98161, Clone:241471F3)(red) or CoraLite®594 Rabbit IgG Isotype Control RecAb (CL594-98136, Clone: 240953C9) (blue). Cells were not fixed.