

For Research Use Only

# CoraLite®594 Anti-Mouse CD2 Rabbit Recombinant Antibody

Catalog Number: CL594-98193



## Basic Information

Catalog Number:

CL594-98193

Size:

100ug , 500 ug/ml

Source:

Rabbit

Isotype:

IgG

GenBank Accession Number:

NM\_013486.2

GeneID (NCBI):

12481

UNIPROT ID:

P08920

Full Name:

CD2 antigen

Calculated MW:

38 kDa

Purification Method:

Protein A purification

CloneNo.:

241548A5

Excitation/Emission maxima wavelengths:

588 nm / 604 nm

## Applications

Tested Applications:

FC

Species Specificity:

mouse

## Background Information

CD2 is a cell surface glycoprotein present on a majority of thymocytes, all mature T cells and subset of NK cells but not on B lymphocytes. It is a pan T-cell marker. CD2 interacts with lymphocyte function-associated antigen (LFA-3/CD58) and CD48/BCM1 to mediate adhesion between T-cells and other cell types. CD2 is implicated in the triggering of T-cells, the cytoplasmic domain is implicated in the signaling function.

## Storage

Storage:

Store at 2-8°C. Avoid exposure to light. Stable for one year after shipment.

Storage Buffer:

PBS with 0.09% sodium azide.

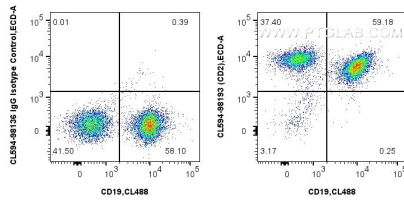
For technical support and original validation data for this product please contact:

T: 1 (888) 4PTGLAB (1-888-478-4522) (toll free in USA), or 1(312) 455-8498 (outside USA)

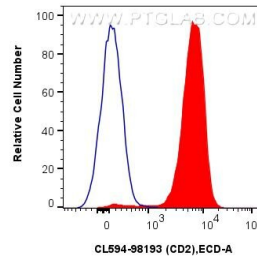
E: [proteintech@ptglab.com](mailto:proteintech@ptglab.com)  
W: [ptglab.com](http://ptglab.com)

This product is exclusively available under Proteintech Group brand and is not available to purchase from any other manufacturer.

## Selected Validation Data



1x10<sup>6</sup> mouse splenocytes were surface stained with CoraLite® Plus 488 Anti-Mouse CD19 (1D3) (CL488-65290, Clone: 1D3), and 5 ul CoraLite®594 Anti-Mouse CD2 Rabbit RecAb (CL594-98193, Clone: 241548A5) or CoraLite®594 Rabbit IgG Isotype Control RecAb (CL594-98136, Clone: 240953C9). Cells were not fixed.



1x10<sup>6</sup> mouse splenocytes were surface stained with 5 ul CoraLite®594 Anti-Mouse CD2 Rabbit RecAb (CL594-98193, Clone: 241548A5) (red) or CoraLite®594 Rabbit IgG Isotype Control RecAb (CL594-98136, Clone: 240953C9) (blue). Cells were not fixed.