

For Research Use Only

# CoraLite®594 Anti-Mouse CCL3/MIP-1 alpha Rabbit Recombinant Antibody

Catalog Number: CL594-98194



## Basic Information

Catalog Number:

CL594-98194

Size:

100ug, 500 ug/ml

Source:

Rabbit

Isotype:

IgG

Immunogen Catalog Number:

EG2170

GenBank Accession Number:

NM\_011337

GeneID (NCBI):

20302

UNIPROT ID:

P10855

Full Name:

chemokine (C-C motif) ligand 3

Calculated MW:

10kd

Purification Method:

Protein A purification

CloneNo.:

241695B10

Recommended Dilutions:

FC (Intra): 0.25 ug per 10<sup>6</sup> cells in a  
100 µl suspension

Excitation/Emission maxima  
wavelengths:

588 nm / 604 nm

## Applications

Tested Applications:

FC (Intra)

Species Specificity:

mouse

Positive Controls:

FC (Intra): LPS and Brefeldin A treated J774A.1 cells,

## Background Information

Chemokine (C-C motif) ligand 3 (CCL3), also known as MIP-1α, belongs to the family of chemokines. CCL3 has been found in the central nervous system and its cognate receptors, CCR1 and CCR5, have been reported to be expressed by astrocytes, microglia and neurons. CCL3 and its receptors, CCR1 and CCR5, also contribute to the development of bone disease in multiple myeloma by supporting tumor growth and regulating osteoclast differentiation. CCL3 is also associated with the regulation of cell growth, angiogenesis, and metastasis of different tumors such as melanoma, renal cell carcinoma, and colorectal cancer. Moreover, CCL3 enhances cell migration and metastasis by up-regulating matrix metalloproteinase-2 (MMP)-2 expression in chondrosarcoma cells.

## Storage

Storage:

Store at 2-8°C. Avoid exposure to light. Stable for one year after shipment.

Storage Buffer:

PBS with 0.09% sodium azide, pH7.3

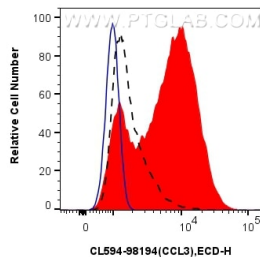
For technical support and original validation data for this product please contact:

T: 1 (888) 4PTGLAB (1-888-478-4522) (toll free  
in USA), or 1(312) 455-8498 (outside USA)

E: [proteintech@ptglab.com](mailto:proteintech@ptglab.com)  
W: [ptglab.com](http://ptglab.com)

This product is exclusively available under Proteintech Group brand and is not available to purchase from any other manufacturer.

## Selected Validation Data



$1 \times 10^6$  LPS and Brefeldin A treated J774A.1 cells were intracellularly stained with 0.25 ug CoraLite®594 Anti-Mouse CCL3 Rabbit RecAb (CL594-98194, Clone: 241695B10) (red) or CoraLite®594 Rabbit IgG Isotype Control RecAb (CL594-98136, Clone: 240953C9) (blue).  $1 \times 10^6$  untreated J774A.1 cells were intracellularly stained with 0.25 ug CoraLite®594 Anti-Mouse CCL3 Rabbit RecAb (CL594-98194, Clone: 241695B10) (black, dashed). Cells were fixed and

