

For Research Use Only

CoraLite®594 Anti-Mouse CD147 Rabbit Recombinant Antibody

Catalog Number: CL594-98229



Basic Information

Catalog Number:

CL594-98229

Size:

100ug , 500 ug/ml

Source:

Rabbit

Isotype:

IgG

GenBank Accession Number:

NM_009768.2

GeneID (NCBI):

12215

UNIPROT ID:

P18572-1

Full Name:

basigin

Calculated MW:

42kDa

Purification Method:

Protein A purification

CloneNo.:

241852B4

Excitation/Emission maxima wavelengths:

588 nm / 604 nm

Applications

Tested Applications:

FC

Species Specificity:

mouse

Background Information

CD147, also known as Basigin or extracellular matrix metalloproteinase inducer (EMMPRIN), is a transmembrane glycoprotein that belongs to the immunoglobulin superfamily (PMID: 7812975). The molecule is composed of an intracellular portion, an extracellular portion and a single transmembrane region. CD147 is expressed on a variety of cell types (e.g., hematopoietic, epithelial, and endothelial cells) and at varying levels (PMID: 32968061). CD147 is a pleiotropic molecule that plays an important role in fetal, neuronal, lymphocyte and extracellular matrix development (PMID: 17945211).

Storage

Storage:

Store at 2-8°C. Avoid exposure to light. Stable for one year after shipment.

Storage Buffer:

PBS with 0.09% sodium azide.

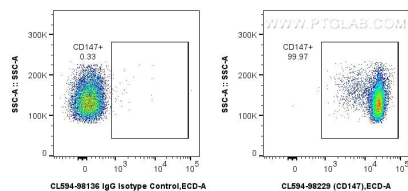
For technical support and original validation data for this product please contact:

T: 1 (888) 4PTGLAB (1-888-478-4522) (toll free in USA), or 1(312) 455-8498 (outside USA)

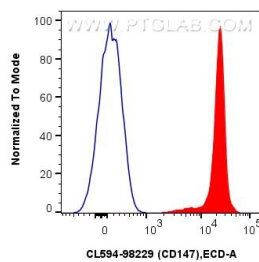
E: proteintech@ptglab.com
W: ptglab.com

This product is exclusively available under Proteintech Group brand and is not available to purchase from any other manufacturer.

Selected Validation Data



1x10⁶ mouse thymocytes were surface stained with 5 ul CoraLite®594 Anti-Mouse CD147 Rabbit RecAb (CL594-98229, Clone:241852B4) or CoraLite®594 Rabbit IgG Isotype Control RecAb (CL594-98136, Clone: 240953C9). Cells were not fixed.



1x10⁶ mouse thymocytes were surface stained with 5 ul CoraLite®594 Anti-Mouse CD147 Rabbit RecAb (CL594-98229, Clone: 241852B4) (red) or 5 ul CoraLite®594 Rabbit IgG Isotype Control RecAb (CL594-98136, Clone: 240953C9) (blue). Cells were not fixed.