

For Research Use Only

CoraLite®594 Anti-Human CD300e Rabbit Recombinant Antibody

Catalog Number:CL594-98235



Basic Information

Catalog Number:

CL594-98235

Size:

100tests , 5 ul/test

Source:

Rabbit

Isotype:

IgG

Immunogen Catalog Number:

EG2638

GenBank Accession Number:

NM_181449.2

GeneID (NCBI):

342510

UNIPROT ID:

Q496F6

Full Name:

CD300e molecule

Calculated MW:

23 kDa

Purification Method:

Protein A purification

CloneNo.:

242031C10

Recommended Dilutions:

FC: 5 ul per 10⁶ cells in a 100 µl suspension

Excitation/Emission maxima wavelengths:

588 nm / 604 nm

Applications

Tested Applications:

FC

Species Specificity:

human

Positive Controls:

FC : human PBMCs,

Background Information

CD300e, also known as immune receptor expressed on myeloid cells 2 (IREM-2), CLM-2, or CMRF35-A5, is one of the CD300 family members which belong to the immunoglobulin (Ig) superfamily (PMID: 15557162; 20039296). CD300e is a type I transmembrane glycoprotein that contains an extracellular region comprising an Ig-like domain, a transmembrane region, and a short cytoplasmic tail (PMID: 15557162; 29358324). It is by monocytes and myeloid dendritic cells and transmits an immune-activating signal by interacting with DNAX-activating protein 12 (DAP12) (PMID: 29358324).

Storage

Storage:

Store at 2-8°C. Avoid exposure to light. Stable for one year after shipment.

Storage Buffer:

PBS with 0.09% sodium azide, pH7.3

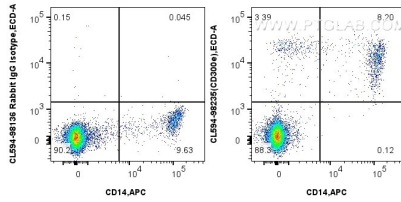
For technical support and original validation data for this product please contact:

T: 1 (888) 4PTGLAB (1-888-478-4522) (toll free in USA), or 1(312) 455-8498 (outside USA)

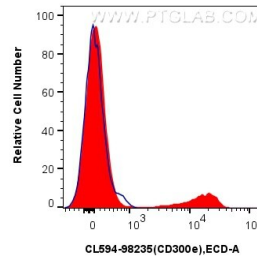
E: proteintech@ptglab.com
W: ptglab.com

This product is exclusively available under Proteintech Group brand and is not available to purchase from any other manufacturer.

Selected Validation Data



1x10⁶ human PBMCs were surface stained with APC Anti-Human CD14, and 5 ul CoraLite®594 Anti-Human CD300e Rabbit RecAb (CL594-98235, Clone: 242031C10) or CoraLite®594 Rabbit IgG Isotype Control RecAb (CL594-98136, Clone: 240953C9). Cells were incubated with FC Receptor Block prior to staining. Cells were not fixed.



1x10⁶ human PBMCs were surface stained with 5 ul CoraLite®594 Anti-Human CD300e Rabbit RecAb (CL594-98235, Clone: 242031C10) (red) or CoraLite®594 Rabbit IgG Isotype Control RecAb (CL594-98136, Clone: 240953C9) (blue). Cells were incubated with FC Receptor Block prior to staining. Cells were not fixed.