

For Research Use Only

CoraLite®594 Anti-Mouse EPCR/CD201 Rabbit Recombinant Antibody

Catalog Number:CL594-98248



Basic Information

Catalog Number:

CL594-98248

Size:

100ug , 500 ug/ml

Source:

Rabbit

Isotype:

IgG

Immunogen Catalog Number:

EG1517

GenBank Accession Number:

NM_011171.2

GeneID (NCBI):

19124

UNIPROT ID:

Q64695

Full Name:

protein C receptor, endothelial

Calculated MW:

27kDa

Purification Method:

Protein A purification

CloneNo.:

241853A7

Recommended Dilutions:

FC: 0.25 ug per 10⁶ cells in a 100 µl suspension

Excitation/Emission maxima wavelengths:

588 nm / 604 nm

Applications

Tested Applications:

FC

Species Specificity:

mouse

Positive Controls:

FC : bEnd.3 cells,

Background Information

EPCR, also known as CD201, protein C receptor (PROCR), or activated protein C receptor (APC receptor), is a transmembrane glycoprotein. EPCR promotes the activation of protein C, which has anticoagulant and cytoprotective effects. EPCR facilitates the activation of protein C by the thrombin-thrombomodulin complex but also facilitates APC-mediated cytoprotective effects on cells that involve the activation of protease-activated receptors (PAR) 1 and 3(PMID: 27207424).

Storage

Storage:

Store at 2-8°C. Avoid exposure to light. Stable for one year after shipment.

Storage Buffer:

PBS with 0.09% sodium azide, pH7.3

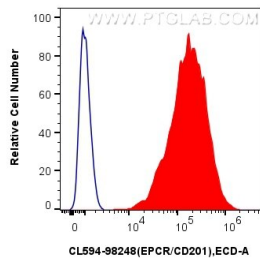
For technical support and original validation data for this product please contact:

T: 1 (888) 4PTGLAB (1-888-478-4522) (toll free in USA), or 1(312) 455-8498 (outside USA)

E: proteintech@ptglab.com
W: ptglab.com

This product is exclusively available under Proteintech Group brand and is not available to purchase from any other manufacturer.

Selected Validation Data



1x10⁶ bEnd.3 cells were surface stained with 0.25 ug CoraLite®594 Anti-Mouse EPCR/CD201 Rabbit RecAb (CL594-98248, Clone: 241853A7) (red) or 0.25 ug CoraLite®594 Rabbit IgG Isotype Control RecAb (CL594-98136, Clone: 240953C9) (blue). Cells were not fixed.