

For Research Use Only

# CoraLite®594 Anti-Rat CD4 Rabbit Recombinant Antibody

Catalog Number: CL594-98252



## Basic Information

### Catalog Number:

CL594-98252

### Size:

100ug , 500 µg/ml

### Source:

Rabbit

### Isotype:

IgG

### Immunogen Catalog Number:

EG2025

### GenBank Accession Number:

NM\_012705.1

### GeneID (NCBI):

24932

### UNIPROT ID:

P05540

### Full Name:

Cd4 molecule

### Calculated MW:

51 kDa

### Purification Method:

Protein A purification

### CloneNo.:

241955C11

### Recommended Dilutions:

FC: 0.25 ug per 10<sup>6</sup> cells in a 100 µl suspension

### Excitation/Emission maxima wavelengths:

588 nm / 604 nm

## Applications

### Tested Applications:

FC

### Species Specificity:

rat

### Positive Controls:

FC : rat splenocytes,

## Background Information

CD4 is a 55-kDa transmembrane glycoprotein expressed on T helper cells, majority of thymocytes, monocytes, macrophages, and dendritic cells (PMID: 9304802; 12213222). CD4 is an accessory protein for MHC class-II antigen/T-cell receptor interaction. It plays an important role in T helper cell development and activation (PMID: 9539765; 3112582). CD4 serves as a receptor for the human immunodeficiency virus (HIV) (PMID: 9304802).

## Storage

### Storage:

Store at 2-8°C. Avoid exposure to light. Stable for one year after shipment.

### Storage Buffer:

PBS with 0.09% sodium azide, pH7.3

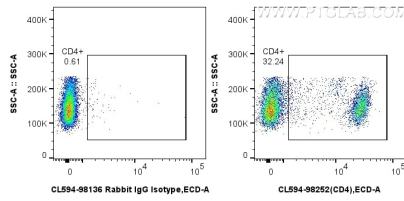
For technical support and original validation data for this product please contact:

T: 1 (888) 4PTGLAB (1-888-478-4522) (toll free in USA), or 1(312) 455-8498 (outside USA)

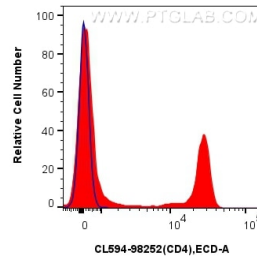
E: [proteintech@ptglab.com](mailto:proteintech@ptglab.com)  
W: [ptglab.com](http://ptglab.com)

This product is exclusively available under Proteintech Group brand and is not available to purchase from any other manufacturer.

## Selected Validation Data



1x10<sup>6</sup> rat splenocytes were surface stained with 0.25 ug CoraLite®594 Anti-Rat CD4 Rabbit RecAb (CL594-98252, Clone: 241955C11) or 0.25 ug CoraLite®594 Rabbit IgG Isotype Control RecAb (CL594-98136, Clone: 240953C9). Cells were not fixed.



1x10<sup>6</sup> rat splenocytes were surface stained with 0.25 ug CoraLite®594 Anti-Rat CD4 Rabbit RecAb (CL594-98252, Clone:241955C11) (red) or 0.25 ug CoraLite®594 Rabbit IgG Isotype Control RecAb (CL594-98136, Clone: 240953C9) (blue). Cells were not fixed.