

For Research Use Only

# CoraLite®594 Anti-Mouse PDGFR alpha/CD140a Rabbit Recombinant Antibody

Catalog Number: CL594-98256



## Basic Information

Catalog Number:

CL594-98256

Size:

100ug , 500 µg/ml

Source:

Rabbit

Isotype:

IgG

Immunogen Catalog Number:

EG1625

GenBank Accession Number:

NM\_001083316.2

GeneID (NCBI):

18595

UNIPROT ID:

P26618-1

Full Name:

platelet derived growth factor  
receptor, alpha polypeptide

Calculated MW:

123kDa

Purification Method:

Protein A purification

CloneNo.:

242025B3

Recommended Dilutions:

FC: 0.25 ug per 10<sup>6</sup> cells in a 100 µl  
suspension

Excitation/Emission maxima  
wavelengths:

588 nm / 604 nm

## Applications

Tested Applications:

FC

Species Specificity:

mouse

Positive Controls:

FC : NIH/3T3 cells,

## Background Information

Platelet-derived growth factor receptor alpha (PDGFR alpha, also known as CD140a) is a cell surface tyrosine kinase receptor for members of the platelet-derived growth factor family. PDGFRA is implicated in the regulation of embryonic development, tumorigenesis, cell proliferation, survival, and chemotaxis. Mutations in the PDGFRA gene have been associated with idiopathic hypereosinophilic syndrome, somatic and familial gastrointestinal stromal tumors, and a variety of other cancers.

## Storage

Storage:

Store at 2-8°C. Avoid exposure to light. Stable for one year after shipment.

Storage Buffer:

PBS with 0.09% sodium azide, pH7.3

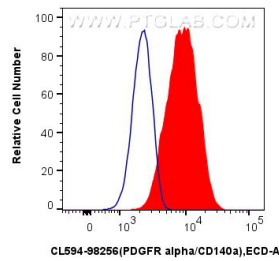
For technical support and original validation data for this product please contact:

T: 1 (888) 4PTGLAB (1-888-478-4522) (toll free  
in USA), or 1(312) 455-8498 (outside USA)

E: [proteintech@ptglab.com](mailto:proteintech@ptglab.com)  
W: [ptglab.com](http://ptglab.com)

This product is exclusively available under Proteintech  
Group brand and is not available to purchase from any  
other manufacturer.

## Selected Validation Data



$1 \times 10^6$  NIH/3T3 cells were surface stained with 0.25 ug CoraLite®594 Anti-Mouse PDGFR alpha/CD140a Rabbit RecAb (CL594-98256, Clone: 242025B3) (red) or 0.25 ug CoraLite®594 Rabbit IgG Isotype Control RecAb (CL594-98136, Clone: 240953C9) (blue). Cells were not fixed.