

For Research Use Only

# CoraLite®594 Anti-Human Integrin alpha 6 Rabbit Recombinant Antibody

Catalog Number:CL594-98257



## Basic Information

Catalog Number:

CL594-98257

Size:

100tests , 5 ul/test

Source:

Rabbit

Isotype:

IgG

GenBank Accession Number:

BC136456

GeneID (NCBI):

3655

UNIPROT ID:

P23229

Full Name:

integrin, alpha 6

Calculated MW:

1073 aa, 119 kDa

Purification Method:

Protein A purification

CloneNo.:

241703B5

Recommended Dilutions:

FC: 5 ul per 10<sup>6</sup> cells in a 100 µl suspension

Excitation/Emission maxima wavelengths:

588 nm / 604 nm

## Applications

Tested Applications:

FC

Species Specificity:

human

Positive Controls:

FC : human peripheral blood lymphocytes,

## Background Information

The integrins are a superfamily of cell adhesion receptors that bind to extracellular matrix ligands, cell-surface ligands, and soluble ligands (PMID: 17543136). They are transmembrane αβ heterodimers and at least 24 distinct integrin heterodimers are formed by the combination of 18 α and eight β known subunits (PMID: 17543136; 20029421). In addition to mediating cell adhesion, integrins also play important roles in modulating signal transduction pathways that control cellular responses including migration, proliferation, differentiation, and apoptosis (PMID:19118207). Integrin alpha 6 (ITGA6, also known as CD49f or VLA-6) is a 120-kDa single-pass type 1 transmembrane glycoprotein, which combines with the beta 1 subunit (ITGB1, CD29) or beta 4 subunit (ITGB4, CD104) to form heterodimeric laminin receptors (PMID: 1976638; 2351695). Integrin alpha 6 mediates cell-to-cell and cell-to-stroma adhesion. It has also been found in many different stem cell populations and is involved in homing and connecting stem cells to their niches and regulating self-renewal mechanisms in stem cells (PMID: 28494695).

## Storage

Storage:

Store at 2-8°C. Avoid exposure to light. Stable for one year after shipment.

Storage Buffer:

PBS with 0.09% sodium azide, pH7.3

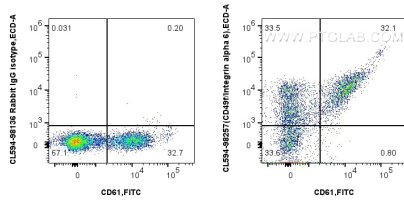
For technical support and original validation data for this product please contact:

T: 1 (888) 4PTGLAB (1-888-478-4522) (toll free in USA), or 1(312) 455-8498 (outside USA)

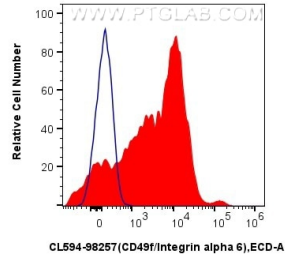
E: [proteintech@ptglab.com](mailto:proteintech@ptglab.com)  
W: [ptglab.com](http://ptglab.com)

This product is exclusively available under Proteintech Group brand and is not available to purchase from any other manufacturer.

## Selected Validation Data



1x10<sup>6</sup> human peripheral blood lymphocytes were surface stained with FITC Anti-Human CD61, and 5 ul CoraLite®594 Anti-Human Integrin alpha 6 Rabbit RecAb (CL594-98257, Clone: 241703B5) or CoraLite®594 Rabbit IgG Isotype Control RecAb (CL594-98136, Clone: 240953C9). Cells were not fixed.



1x10<sup>6</sup> human peripheral blood lymphocytes were surface stained with 5 ul CoraLite®594 Anti-Human Integrin alpha 6 Rabbit RecAb (CL594-98257, Clone: 241703B5) (red) or CoraLite®594 Rabbit IgG Isotype Control RecAb (CL594-98136, Clone: 240953C9) (blue). Cells were not fixed.