

For Research Use Only

# FcZero-rAb® CoraLite® Plus 594 Anti-Human SLAMF7/CD319 Rabbit Recombinant Antibody

Catalog Number: CL594-FcA98093



## Basic Information

**Catalog Number:**

CL594-FcA98093

**Size:**

100 tests, 5 ul/test

**Source:**

Rabbit

**Isotype:**

IgG

**GenBank Accession Number:**

BC027867

**GeneID (NCBI):**

57823

**UNIPROT ID:**

Q9NQ25

**Full Name:**

SLAM family member 7

**Calculated MW:**

335 aa, 37 kDa

**Purification Method:**

Protein A purification

**CloneNo.:**

241321F11

**Recommended Dilutions:**

FC: 5 ul per 10<sup>6</sup> cells in a 100 µl suspension

**Excitation/Emission maxima wavelengths:**

588 nm / 604 nm

## Applications

**Tested Applications:**

FC

**Species Specificity:**

human

**Positive Controls:**

FC : human PBMCs,

## Background Information

Signaling lymphocyte activation molecule (SLAM) family receptors is a group of type I transmembrane receptors belonging to the immunoglobulin superfamily (PMID: 37251372). The SLAM family contains nine members that contain an extracellular segment comprising two or four Ig-like domains (V-like variable and C2-like constant), a transmembrane region and a cytoplasmic tail (PMID: 29662641). They are involved in various physiological and pathological processes, including the regulation of immunological responses and the route of viral entry. SLAMF7, also known as CS1, CRACC or CD319, is expressed on NK cells, CD8+ T lymphocytes, B lymphocytes, and mature dendritic cells (PMID: 28861320). It exerts both activating and inhibitory effects depending on the expression status of SAP or EAT-2. SLAMF7 is overexpressed in multiple myeloma and makes it a target for immunotherapy (PMID: 28861320).

## Storage

**Storage:**

Store at 2-8°C. Avoid exposure to light. Stable for one year after shipment.

**Storage Buffer:**

PBS with 0.09% sodium azide and 0.5% BSA, pH7.3

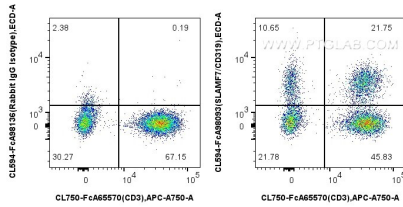
For technical support and original validation data for this product please contact:

T: 1 (888) 4PTGLAB (1-888-478-4522) (toll free in USA), or 1(312) 455-8498 (outside USA)

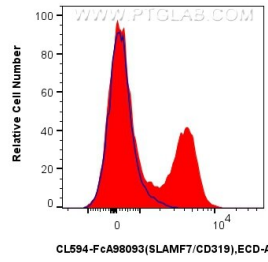
E: [proteintech@ptglab.com](mailto:proteintech@ptglab.com)  
W: [ptglab.com](http://ptglab.com)

**This product is exclusively available under Proteintech Group brand and is not available to purchase from any other manufacturer.**

## Selected Validation Data



1x10<sup>6</sup> human PBMCs were surface stained with FcZero-rAb® CoraLite® Plus 750 Anti-Human CD3 (UCHT1), and 5 ul CoraLite® Plus 594 Anti-Human SLAMF7/CD319 Rabbit RecAb (CL594-FcA98093, Clone: 241321F11) or FcZero-rAb® CoraLite® Plus 594 Rabbit IgG Isotype Control Recombinant Antibody (CL594-FcA98136, Clone: 240953C9). Cells were not fixed.



1x10<sup>6</sup> human PBMCs were surface stained with 5 ul CoraLite® Plus 594 Anti-Human SLAMF7/CD319 Rabbit RecAb (CL594-FcA98093, Clone: 241321F11) (red) or FcZero-rAb® CoraLite® Plus 594 Rabbit IgG Isotype Control Recombinant Antibody (CL594-FcA98136, Clone: 240953C9) (blue). Cells were not fixed.