

For Research Use Only

# FcZero-rAb® CoraLite® Plus 594 Anti-Human ICAM3/CD50 Rabbit Recombinant Antibody

Catalog Number: CL594-FcA98097



## Basic Information

Catalog Number:

CL594-FcA98097

Size:

100 tests, 5 ul/test

Source:

Rabbit

Isotype:

IgG

GenBank Accession Number:

BC058903

GeneID (NCBI):

3385

UNIPROT ID:

P32942

Full Name:

intercellular adhesion molecule 3

Calculated MW:

547 aa, 60 kDa

Purification Method:

Protein A purification

CloneNo.:

241418E8

Recommended Dilutions:

FC: 5 ul per 10<sup>6</sup> cells in a 100 µl suspension

Excitation/Emission maxima wavelengths:

588 nm / 604 nm

## Applications

Tested Applications:

FC

Species Specificity:

human

Positive Controls:

FC : human PBMCs,

## Background Information

The intercellular adhesion molecule (ICAM) family is a subfamily of immunoglobulin superfamily with five known ICAM family members (ICAM1 to ICAM5) which play a role in inflammation, immune responses, and intracellular signaling (PMID: 23287428; 29477378). ICAM3, also known as CD50, is a type I transmembrane glycoprotein that contains five C2-type immunoglobulin-like domains in its extracellular region, a single transmembrane segment, and a C-terminus cytoplasmic tail. ICAM3 is selectively expressed on leukocytes (PMID: 1730916; 8132828). It is the primary ligand for LFA-1 and is involved in various immune processes, including T-cell activation, and macrophage recognition of apoptotic cells (PMID: 11812993; 23775590).

## Storage

Storage:

Store at 2-8°C. Avoid exposure to light. Stable for one year after shipment.

Storage Buffer:

PBS with 0.09% sodium azide and 0.5% BSA, pH7.3

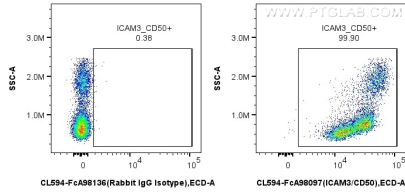
For technical support and original validation data for this product please contact:

T: 1 (888) 4PTGLAB (1-888-478-4522) (toll free in USA), or 1(312) 455-8498 (outside USA)

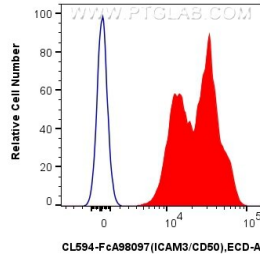
E: [proteintech@ptglab.com](mailto:proteintech@ptglab.com)  
W: [ptglab.com](http://ptglab.com)

This product is exclusively available under Proteintech Group brand and is not available to purchase from any other manufacturer.

## Selected Validation Data



1x10<sup>6</sup> human PBMCs were surface stained with 5 ul CoraLite® Plus 594 Anti-Human ICAM3/CD50 Rabbit RecAb (CL594-FcA98097, Clone: 241418E8) or FcZero-rAb® CoraLite® Plus 594 Rabbit IgG Isotype Control Recombinant Antibody (CL594-FcA98136, Clone: 240953C9). Cells were not fixed.



1x10<sup>6</sup> human PBMCs were surface stained with 5 ul CoraLite® Plus 594 Anti-Human ICAM3/CD50 Rabbit RecAb (CL594-FcA98097, Clone: 241418E8) (red) or FcZero-rAb® CoraLite® Plus 594 Rabbit IgG Isotype Control Recombinant Antibody (CL594-FcA98136, Clone: 240953C9) (blue). Cells were not fixed.