

For Research Use Only

# FcZero-rAb® CoraLite® Plus 594 Anti-Human LILRA5/CD85f Rabbit Recombinant Antibody



Catalog Number: CL594-FcA98477

## Basic Information

Catalog Number:

CL594-FcA98477

Size:

100 tests, 5 ul/test

Source:

Rabbit

Isotype:

IgG

Immunogen Catalog Number:

EG2737

GenBank Accession Number:

NM\_021250.4

GeneID (NCBI):

353514

UNIPROT ID:

A6NI73-1

Full Name:

leukocyte immunoglobulin-like receptor, subfamily A (with TM domain), member 5

Calculated MW:

33 kDa

Purification Method:

Protein A purification

CloneNo.:

250298G11

Recommended Dilutions:

FC: 5 ul per 10<sup>6</sup> cells in a 100 µl suspension

Excitation/Emission maxima wavelengths:

588 nm / 604 nm

## Applications

Tested Applications:

FC

Species Specificity:

human

Positive Controls:

FC : human PBMCs,

## Background Information

LILRA5, also named as CD85f, ILT11, LLRB7 or LIR9, is a member of the leukocyte immunoglobulin-like receptor (LIR) family, which is a group of immune inhibitory and stimulatory receptors (PMID: 15304001). There are two membrane-bound and two soluble forms of LILRA5. The transmembrane LILRA5 contains a short cytoplasmic domain and a charged arginine residue within the transmembrane region (PMID: 19009525). It is mostly expressed in myeloid cells, including monocytes and neutrophils (PMID: 12393390). LILRA5 may play a role in triggering innate immune responses. It does not function in class I MHC antigens recognition (PMID: 16675463).

## Storage

Storage:

Store at 2-8°C. Avoid exposure to light. Stable for one year after shipment.

Storage Buffer:

PBS with 0.09% sodium azide and 0.5% BSA, pH7.3

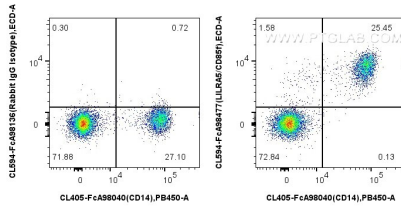
For technical support and original validation data for this product please contact:

T: 1 (888) 4PTGLAB (1-888-478-4522) (toll free in USA), or 1(312) 455-8498 (outside USA)

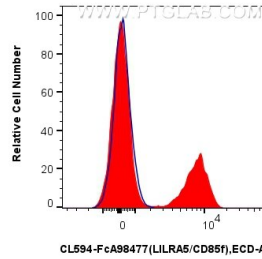
E: [proteintech@ptglab.com](mailto:proteintech@ptglab.com)  
W: [ptglab.com](http://ptglab.com)

This product is exclusively available under Proteintech Group brand and is not available to purchase from any other manufacturer.

## Selected Validation Data



1x10<sup>6</sup> human PBMCs were surface stained with CoraLite® Plus 405 Anti-Human CD14, and 5 ul CoraLite® Plus 594 Anti-Human LILRA5/CD85f Rabbit RecAb (CL594-FcA98477, Clone: 250298G11) or CoraLite® 594 Rabbit IgG Isotype Control RecAb (CL594-FcA98136, Clone: 240953C9). Cells were not fixed.



1x10<sup>6</sup> human PBMCs were surface stained with 5 ul CoraLite® Plus 594 Anti-Human LILRA5/CD85f Rabbit RecAb (CL594-FcA98477, Clone: 250298G11) (red) or CoraLite® 594 Rabbit IgG Isotype Control RecAb (CL594-FcA98136, Clone: 240953C9) (blue). Cells were not fixed.