

For Research Use Only

# CoraLite® Plus 647-conjugated GST Tag Polyclonal antibody

Catalog Number: CL647-10000

1 Publications



## Basic Information

Catalog Number:

CL647-10000

Size:

100ul , Concentration: 1000 µg/ml by Nanodrop;

Source:

Rabbit

Isotype:

IgG

GenBank Accession Number:

FN315687

GeneID (NCBI):

Full Name:

Calculated MW:

26 kDa

Purification Method:

Antigen Affinity Purified

Excitation/Emission maxima wavelengths:

654 nm / 674 nm

## Applications

Tested Applications:

FC (Intra)

Species Specificity:

recombinant protein

## Background Information

GST(Glutathione S-Transferase) is a widely used protein tag encoded by the Schistosoma japonicum. GST provides both an easily detectable tag and a simple purification process with little effect on the biological function of the protein of interest. This GST-fusion protein can then be purified from cells via its high affinity for glutathione. Antibodies to GST are useful for checking protein expression both in plaques and on western blots as well as for immunoaffinity purification of proteins expressed in cells. This antibody can be used to detect the GST tagged protein. This antibody can be used as Rabbit IgG control in FC.

## Notable Publications

Author	Pubmed ID	Journal	Application
Michinori Ishitoku	37515185	Viruses	

## Storage

Storage:

Store at -20°C. Avoid exposure to light. Stable for one year after shipment.

Storage Buffer:

PBS with 50% Glycerol, 0.05% Proclin300, 0.5% BSA, pH 7.3.

Aliquoting is unnecessary for -20° C storage

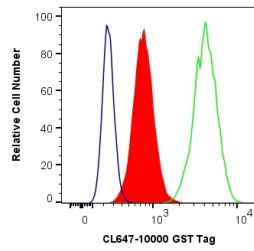
For technical support and original validation data for this product please contact:

T: 1 (888) 4PTGLAB (1-888-478-4522) (toll free in USA), or 1(312) 455-8498 (outside USA)

E: [proteintech@ptglab.com](mailto:proteintech@ptglab.com)  
W: [ptglab.com](http://ptglab.com)

This product is exclusively available under Proteintech Group brand and is not available to purchase from any other manufacturer.

## Selected Validation Data



1X10<sup>6</sup> Jurkat cells were intracellularly stained with 0.4 ug CoraLite® Plus 647 Anti-GST Tag (CL647-10000) (red), or 0.4 ug CoraLite® Plus 488-conjugated IGF2R antibody (CL488-20253) (green), or 0.4 ug Control Antibody (blue). Cells were fixed with 4% PFA and permeabilized with Flow Cytometry Perm Buffer (PF00011-C).