

For Research Use Only

CoraLite® Plus 647-conjugated S100A6 Polyclonal antibody



Catalog Number: CL647-10245

Featured Product

Basic Information

Catalog Number: CL647-10245	GenBank Accession Number: BC001431	Purification Method: Antigen affinity purification
Size: 100ul , Concentration: 1000 µg/ml by Nanodrop;	GeneID (NCBI): 6277	Excitation/Emission maxima wavelengths: 654 nm / 674 nm
Source: Rabbit	Full Name: S100 calcium binding protein A6	
Isotype: IgG	Calculated MW: 10 kDa	
Immunogen Catalog Number: AG0385	Observed MW: 10 kDa	

Applications

Tested Applications:
FC (Intra)

Species Specificity:
human

Background Information

S100A6 is also named as calyculin, prolactin receptor-associated protein (PRA), growth factor-inducible protein 2A9 or MLN4. It belongs to S100 family of low molecular weight, acidic, calcium-binding proteins which contain two EF-hand calcium binding sites. S100A6 may function as a calcium sensor to activate several processes in the calcium signal transduction pathway of cell growth, proliferation, secretion and exocytosis. The antibody is specific for S100A6.

Storage

Storage:
Store at -20°C. Avoid exposure to light. Stable for one year after shipment.

Storage Buffer:
PBS with 50% Glycerol, 0.05% Proclin300, 0.5% BSA, pH 7.3.

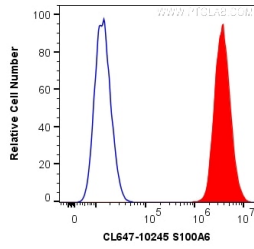
Aliquoting is unnecessary for -20°C storage

*** 20ul sizes contain 0.1% BSA

For technical support and original validation data for this product please contact:
T: 1 (888) 4PTGLAB (1-888-478-4522) (toll free in USA), or 1(312) 455-8498 (outside USA) E: proteintech@ptglab.com W: ptglab.com

This product is exclusively available under Proteintech Group brand and is not available to purchase from any other manufacturer.

Selected Validation Data



1X10⁶ HeLa cells were intracellularly stained with 0.2 ug CoraLite® Plus 647 Anti-Human S100A6 (CL647-10245) (red), or 0.2 ug isotype control (blue). Cells were fixed and permeabilized with Transcription Factor Staining Buffer Kit (PF00011).