

For Research Use Only

CoraLite® Plus 647-conjugated Mouse-IgG Polyclonal antibody

Catalog Number:CL647-10283



Basic Information

Catalog Number: CL647-10283	GenBank Accession Number: GeneID (NCBI):	Purification Method: Antigen affinity purification
Size: 100ul , Concentration: 1000 µg/ml by Nanodrop;	Full Name:	Recommended Dilutions: IF 1:50-1:500
Source: Rabbit	Calculated MW: 155 kDa	Excitation/Emission maxima wavelengths: 650 nm / 665 nm
Isotype: IgG	Observed MW: 25 kDa, 50-55 kDa	

Applications

Tested Applications: IF	Positive Controls: IF : HeLa cells,
Species Specificity: mouse	

Background Information

This antibody detects all the heavy and light chains of total mouse IgG.

Storage

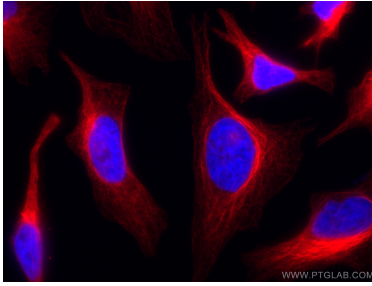
Storage:
Store at -20°C. Avoid exposure to light.
Storage Buffer:
PBS with 50% Glycerol, 0.05% Proclin300, 0.5% BSA, pH 7.3.
Aliquoting is unnecessary for -20°C storage

*** 20ul sizes contain 0.1% BSA

For technical support and original validation data for this product please contact:
T: 1 (888) 4PTGLAB (1-888-478-4522) (toll free in USA), or 1(312) 455-8498 (outside USA)
E: proteintech@ptglab.com
W: ptglab.com

This product is exclusively available under Proteintech Group brand and is not available to purchase from any other manufacturer.

Selected Validation Data



Immunofluorescent analysis of (4% PFA) fixed HeLa cells using 66031-1-Ig (alpha tubulin antibody) and CL647-10283 (CL647-Rabbit anti-Mouse IgG as secondary antibody at dilution of 1:200.