

For Research Use Only

# CoraLite® Plus 647-conjugated Cytokeratin 19 Polyclonal antibody



Catalog Number:CL647-10712

## Basic Information

<b>Catalog Number:</b> CL647-10712	<b>GenBank Accession Number:</b> BC007628	<b>Purification Method:</b> Antigen affinity purification
<b>Size:</b> 100ul , Concentration: 1000 µg/ml by Nanodrop;	<b>GeneID (NCBI):</b> 3880	<b>Excitation/Emission maxima wavelengths:</b> 654 nm / 674 nm
<b>Source:</b> Rabbit	<b>UNIPROT ID:</b> P08727	
<b>Isotype:</b> IgG	<b>Full Name:</b> keratin 19	
<b>Immunogen Catalog Number:</b> AG1085	<b>Calculated MW:</b> 40 kDa	
	<b>Observed MW:</b> 44-50 kDa	

## Applications

**Tested Applications:**  
FC (Intra)

**Species Specificity:**  
human, mouse

## Background Information

Keratins are a large family of proteins that form the intermediate filament cytoskeleton of epithelial cells. Keratin expression is highly regulated, tissue specific, and varies according to cell-state. Type I keratins consist of acidic, low molecular weight proteins with MW ranging from 40 kDa (KRT19) to 64 kDa (KRT9). Type 2 keratins consist of basic or neutral, high molecular weight proteins with MW from 52 kDa (KRT8) to 67 kDa (KRT18). Keratin 19 is a type I cytokeratin. It is a biochemical marker of skin stem cells in vivo and in vitro.

## Storage

**Storage:**  
Store at -20°C. Avoid exposure to light. Stable for one year after shipment.

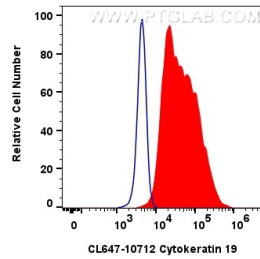
**Storage Buffer:**  
PBS with 50% Glycerol, 0.05% Proclin300, 0.5% BSA, pH 7.3.

**Aliquoting is unnecessary for -20°C storage**

For technical support and original validation data for this product please contact:  
T: 1 (888) 4PTGLAB (1-888-478-4522) (toll free in USA), or 1(312) 455-8498 (outside USA)  
E: [proteintech@ptglab.com](mailto:proteintech@ptglab.com)  
W: [ptglab.com](http://ptglab.com)

This product is exclusively available under Proteintech Group brand and is not available to purchase from any other manufacturer.

## Selected Validation Data



$1 \times 10^6$  HeLa cells were intracellularly stained with 0.8  $\mu$ g CoraLite® Plus 647-conjugated Cytokeratin 19 Polyclonal antibody (CL647-10712)(red), or 0.8  $\mu$ g CoraLite® Plus 647-conjugated Rabbit IgG control Rabbit PolyAb (CL647-30000) (blue). Cells were fixed with 4% PFA and permeabilized with Flow Cytometry Perm Buffer (PF00011-C).