

For Research Use Only

CoraLite® Plus 647-conjugated Septin 9 Polyclonal antibody

Catalog Number: CL647-10769

Featured Product



Basic Information

Catalog Number:

CL647-10769

Size:

100ul , Concentration: 1000 ug/ml by Nanodrop;

Source:

Rabbit

Isotype:

IgG

Immunogen Catalog Number:

AG1218

GenBank Accession Number:

BC021192

GeneID (NCBI):

10801

UNIPROT ID:

Q9UHD8

Full Name:

septin 9

Calculated MW:

64 kDa

Observed MW:

65 kDa, 38-40 kDa

Purification Method:

Antigen affinity purification

Recommended Dilutions:

IF/ICC 1:50-1:500

Excitation/Emission maxima wavelengths:

654 nm / 674 nm

Applications

Tested Applications:

IF/ICC, FC (Intra)

Species Specificity:

human, mouse, rat

Positive Controls:

IF/ICC : HeLa cells,

Background Information

Septin 9 belongs to the septin family which is a group of highly conserved GTP-binding proteins in eukaryotes. SEPT9 gene methylation has been implicated as a biomarker for colorectal cancer(CRC). this antibody can identify all of the isoforms about SEPT9.

Storage

Storage:

Store at -20°C. Avoid exposure to light. Stable for one year after shipment.

Storage Buffer:

PBS with 50% Glycerol, 0.05% Proclin300, 0.5% BSA, pH 7.3.

Aliquoting is unnecessary for -20°C storage

For technical support and original validation data for this product please contact:

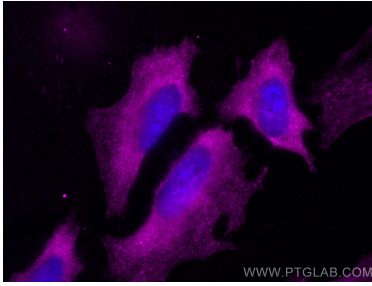
T: 1 (888) 4PTGLAB (1-888-478-4522) (toll free in USA), or 1(312) 455-8498 (outside USA)

E: proteintech@ptglab.com

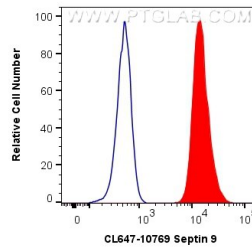
W: ptglab.com

This product is exclusively available under Proteintech Group brand and is not available to purchase from any other manufacturer.

Selected Validation Data



Immunofluorescent analysis of (-20°C Methanol) fixed HeLa cells using CoraLite® Plus 647 Septin 9 antibody (CL647-10769) at dilution of 1:200.



1X10⁶ HepG2 cells were intracellularly stained with 0.4 ug CoraLite® Plus 647 Anti-Human Septin 9 (CL647-10769) (red), or 0.4 ug Isotype Control. Cells were fixed with 4% PFA and permeabilized with Flow Cytometry Perm Buffer (PF00011-C).