

For Research Use Only

CoraLite® Plus 647-conjugated Annexin V Polyclonal antibody



Catalog Number: CL647-11060

Featured Product

Basic Information

Catalog Number: CL647-11060	GenBank Accession Number: BC018671	Purification Method: Antigen affinity purification
Size: 100ul , Concentration: 1000 µg/ml by Nanodrop;	GeneID (NCBI): 308	Recommended Dilutions: IF 1:50-1:500
Source: Rabbit	Full Name: annexin A5	Excitation/Emission maximum wavelengths: 654 nm / 674 nm
Isotype: IgG	Calculated MW: 36 kDa	
Immunogen Catalog Number: AG1538	Observed MW: 36 kDa	

Applications

Tested Applications: FC (Intra), IF	Positive Controls: IF : HeLa cells,
Species Specificity: human, mouse, pig, rat	

Background Information

Annexin A5 (ANXA5), is a member of the structurally related family of annexin proteins some of which have been implicated in membrane-related events along exocytotic and endocytotic pathways. Annexin 5 is a phospholipase A2 and protein kinase C inhibitory protein with calcium channel activity and a potential role in cellular signal transduction, inflammation, growth and differentiation. Annexin 5 has also been described as placental anticoagulant protein I, vascular anticoagulant-alpha, endonexin II, lipocortin V, placental protein 4 and anchorin CII.

Storage

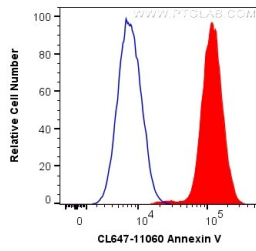
Storage:
Store at -20°C. Avoid exposure to light. Stable for one year after shipment.
Storage Buffer:
PBS with 50% Glycerol, 0.05% Proclin300, 0.5% BSA, pH 7.3.
Aliquoting is unnecessary for -20°C storage

*** 20ul sizes contain 0.1% BSA

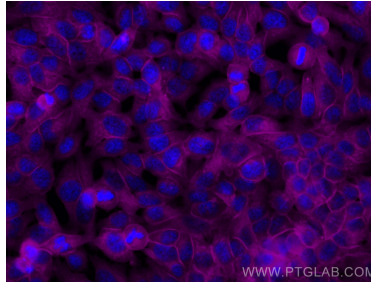
For technical support and original validation data for this product please contact:
T: 1 (888) 4PTGLAB (1-888-478-4522) (toll free in USA), or 1(312) 455-8498 (outside USA)
E: proteintech@ptglab.com
W: ptglab.com

This product is exclusively available under Proteintech Group brand and is not available to purchase from any other manufacturer.

Selected Validation Data



1X10⁶ HeLa cells were intracellularly stained with 0.2 ug CoraLite® Plus 647 Anti-Human Annexin V (CL647-11060) (red), or 0.2 ug isotype control (blue). Cells were fixed with 90% MeOH.



Immunofluorescent analysis of (-20°C Methanol) fixed HeLa cells using CoraLite® Plus 647 Annexin V antibody (CL647-11060) at dilution of 1:100.