

For Research Use Only

# CoraLite® Plus 647-conjugated GOLGA2/GM130 Polyclonal antibody



Catalog Number: **CL647-11308**

## Basic Information

<b>Catalog Number:</b> CL647-11308	<b>GenBank Accession Number:</b> BC014188	<b>Purification Method:</b> Antigen affinity purification
<b>Size:</b> 100ul , Concentration: 1000 µg/ml by Nanodrop;	<b>GeneID (NCBI):</b> 2801	<b>Recommended Dilutions:</b> IF/ICC 1:50-1:500
<b>Source:</b> Rabbit	<b>UNIPROT ID:</b> Q08379	<b>Excitation/Emission maxima wavelengths:</b> 654 nm / 674 nm
<b>Isotype:</b> IgG	<b>Full Name:</b> golgi autoantigen, golgin subfamily a, 2	
<b>Immunogen Catalog Number:</b> AG1848	<b>Calculated MW:</b> 111 kDa	
	<b>Observed MW:</b> 130 kDa	

## Applications

<b>Tested Applications:</b> IF/ICC, FC (Intra)	<b>Positive Controls:</b> IF/ICC : HepG2 cells,
<b>Species Specificity:</b> human, canine	

## Background Information

GOLGA2, also known as GM130, is a 130 kDa cis-Golgi matrix protein, one component of the detergent and salt-resistant Golgi matrix. It is a peripheral membrane protein highly bound to the Golgi membrane and localized mainly at the cytoplasmic face of the cis-Golgi membrane. Together with its interacting partner proteins, including p115, giantin, GRASP65, and Rab GTPase, GOLGA2/GM130 is involved in regulating ER-to-Golgi transport and maintaining the Golgi structure. Emerging evidence suggests that the GOLGA2/GM130 has potential roles in the control of glycosylation, cell cycle progression, and higher-order cell functions such as cell polarization and directed cell migration. (PMID: 20197635)

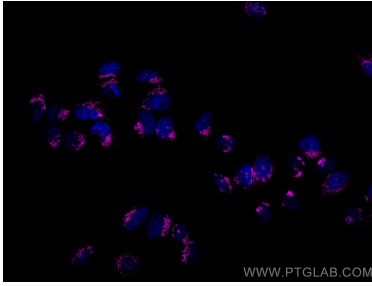
## Storage

**Storage:**  
Store at -20°C. Avoid exposure to light. Stable for one year after shipment.  
**Storage Buffer:**  
PBS with 50% Glycerol, 0.05% Proclin300, 0.5% BSA, pH 7.3.  
**Aliquoting is unnecessary for -20°C storage**

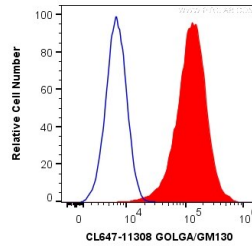
For technical support and original validation data for this product please contact:  
T: 1 (888) 4PTGLAB (1-888-478-4522) (toll free in USA), or 1(312) 455-8498 (outside USA)  
E: [proteintech@ptglab.com](mailto:proteintech@ptglab.com)  
W: [ptglab.com](http://ptglab.com)

This product is exclusively available under Proteintech Group brand and is not available to purchase from any other manufacturer.

## Selected Validation Data



Immunofluorescent analysis of (4% PFA) fixed HepG2 cells using CoraLite® Plus 647 GOLGA2/GM130 antibody (CL647-11308) at dilution of 1:200.



1X10<sup>6</sup> HeLa cells were intracellularly stained with 0.2 ug CoraLite® Plus 647 Anti-Human GOLGA2/GM130 (CL647-11308) (red), or 0.2 ug Control Antibody (blue). Cells were fixed with 4% PFA and permeabilized with Flow Cytometry Perm Buffer (PF00011-C).