

For Research Use Only

CoraLite® Plus 647-conjugated NSD3 Polyclonal antibody



Catalog Number: CL647-11345

Featured Product

Basic Information

Catalog Number: CL647-11345	GenBank Accession Number: BC012059	Purification Method: Antigen affinity purification
Size: 100ul , Concentration: 1000 µg/ml by Nanodrop;	GeneID (NCBI): 54904	Excitation/Emission maxima wavelengths: 654 nm / 674 nm
Source: Rabbit	Full Name: Wolf-Hirschhorn syndrome candidate 1-like 1	
Isotype: IgG	Calculated MW: 1437 aa, 162 kDa	
Immunogen Catalog Number: AG1894	Observed MW: 160-170 kDa, 68-72 kDa	

Applications

Tested Applications:
FC (Intra)

Species Specificity:
human, rat

Background Information

WHSC1L1, also named as NSD3 and DC28, belongs to the histone-lysine methyltransferase family and SET2 subfamily. It is histone methyltransferase. WHSC1L1 is a potently transforming oncogenes based on the number of altered phenotypes expressed by the cells. It contains a PWWP-domain that is a methyl-lysine recognition motif involved in histone code modification and epigenetic regulation of gene expression. Knockdown of WHSC1L1 in 8p11-12-amplified breast cancer cells resulted in profound loss of growth and survival of these cells. (PMID: 20940404). This antibody recognize the long isoform (160-170 kDa) and short isoform (68-72 kDa).

Storage

Storage:
Store at -20°C. Avoid exposure to light. Stable for one year after shipment.

Storage Buffer:
PBS with 50% Glycerol, 0.05% Proclin300, 0.5% BSA, pH 7.3.

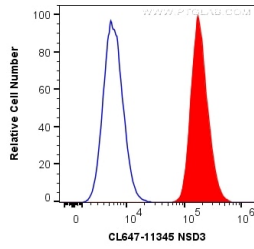
Aliquoting is unnecessary for -20°C storage

*** 20ul sizes contain 0.1% BSA

For technical support and original validation data for this product please contact:
T: 1 (888) 4PTGLAB (1-888-478-4522) (toll free in USA), or 1(312) 455-8498 (outside USA) E: proteintech@ptglab.com W: ptglab.com

This product is exclusively available under Proteintech Group brand and is not available to purchase from any other manufacturer.

Selected Validation Data



1X10⁶ HeLa cells were intracellularly stained with 0.2 ug CoraLite® Plus 647 Anti-Human NSD3 (CL647-11345) (red), or 0.2 ug Isotype Control (blue). Cells were fixed with 4% PFA .