

For Research Use Only

# CoraLite® Plus 647-conjugated TOM20 Polyclonal antibody

Catalog Number: CL647-11802

Featured Product

2 Publications



## Basic Information

Catalog Number:

CL647-11802

Size:

100ul, Concentration: 1000 µg/ml by Nanodrop;

Source:

Rabbit

Isotype:

IgG

Immunogen Catalog Number:

AG2378

GenBank Accession Number:

BC000882

GeneID (NCBI):

9804

UNIPROT ID:

Q15388

Full Name:

translocase of outer mitochondrial membrane 20 homolog (yeast)

Calculated MW:

145 aa, 16 kDa

Observed MW:

16 kDa

Purification Method:

Antigen affinity purification

Recommended Dilutions:

IF/ICC 1:50-1:500

Excitation/Emission maxima wavelengths:

654 nm / 674 nm

## Applications

Tested Applications:

IF/ICC, FC (Intra)

Cited Applications:

IF

Species Specificity:

human, mouse, rat

Cited Species:

human

Positive Controls:

IF/ICC : HeLa cells,

## Background Information

TOM20, also named as KIAA0016, belongs to the Tom20 family. It is a central component of the receptor complex responsible for the recognition and translocation of cytosolically synthesized mitochondrial preproteins. Together with TOM22, TOM20 functions as the transit peptide receptor at the surface of the mitochondrion outer membrane and facilitates the movement of preproteins into the TOM40 translocation pore. TOM20 is characterized as major docking receptors to mediate the recognition by different mechanisms.

## Notable Publications

Author	Pubmed ID	Journal	Application
Zemin Song	39986274	Cell Stem Cell	IF
Minwoo Nam	39592843	Nat Metab	IF

## Storage

Storage:

Store at -20°C. Avoid exposure to light. Stable for one year after shipment.

Storage Buffer:

PBS with 50% glycerol, 0.05% Proclin300, 0.5% BSA, pH7.3

Aliquoting is unnecessary for -20°C storage

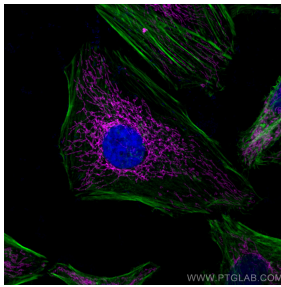
For technical support and original validation data for this product please contact:

T: 1 (888) 4PTGLAB (1-888-478-4522) (toll free in USA), or 1(312) 455-8498 (outside USA)

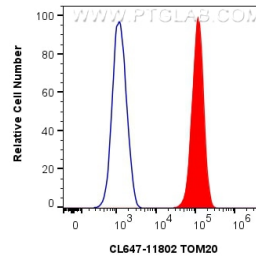
E: [proteintech@ptglab.com](mailto:proteintech@ptglab.com)  
W: [ptglab.com](http://ptglab.com)

This product is exclusively available under Proteintech Group brand and is not available to purchase from any other manufacturer.

## Selected Validation Data



Immunofluorescent analysis of (4% PFA) fixed HeLa cells using CoraLite® Plus 647 TOM20 antibody (CL647-11802) at dilution of 1:200, CL488-Phalloidin (green).



1X10<sup>6</sup> HepG2 cells were intracellularly stained with 0.8 ug CoraLite® Plus 647 Anti-Human TOM20 (CL647-11802) (red), or 0.8 ug CoraLite® Plus 647-conjugated Rabbit IgG control Rabbit PolyAb (CL647-30000, Clone: ) (blue). Cells were fixed with 4% PFA and permeabilized with Flow Cytometry Perm Buffer (PF00011-C).